

## Lease Statistics (FY 2005)

### ◆ Outline

The total lease transaction volume in FY 2005 is 7,941.3 billion yen, increased by 4.1% compared with the volume in FY 2004, which indicates stable growth continuing from FY 2004 <corporations researched :259>.

Leasing percentage to total private capital investment is 9.42% and this means that approximate 10% of the private capital investment is occupied by lease.

In detail of the lease transaction volume, with respect to type of equipment, Factory Equipment has kept growing steadily, while Information and Communication Equipment has changed positive growth to the decline. In regard to type of Lessee's size, the volume of "Small and Medium sized Companies" has risen in a row of two years and that of "Large Companies" has also turned to its increase. In regard with type of Business, "Manufacturing Sector" has changed to positive growth and "Non- Manufacturing Sector" has made an increase in a row of three years.

### ◆ Leasing Percentage

Leasing Percentage (ratio of leasing capital investment to the total private capital investment) in FY 2005 is 9.42%, which indicates a slight reduction. Lease, however, plays a role of approximate 10% of the total private capital investment.

### ◆ Lease Transaction Volume by Type of Equipment

Factory Equipment (19.6% up) has showed double-digit increase in row of three years since FY 2003. Medical Equipment (10.9% up), Office Equipment (8.7% up) and Commercial and Service Equipment (7.0% up) have indicated stable growth continuing from FY 2004. Industrial Equipment (2.6% up) has also turned to positive growth. On the other hand, Information and Communication Equipment (0.8% down) has fallen into the slight decline due to the drop of Computers (12.0% down) and Construction Equipment (2.2% down) has also changed to be on the decrease slightly.

### ◆ Lease Transaction Volume by Size of Lessee and Lessee's Business Type

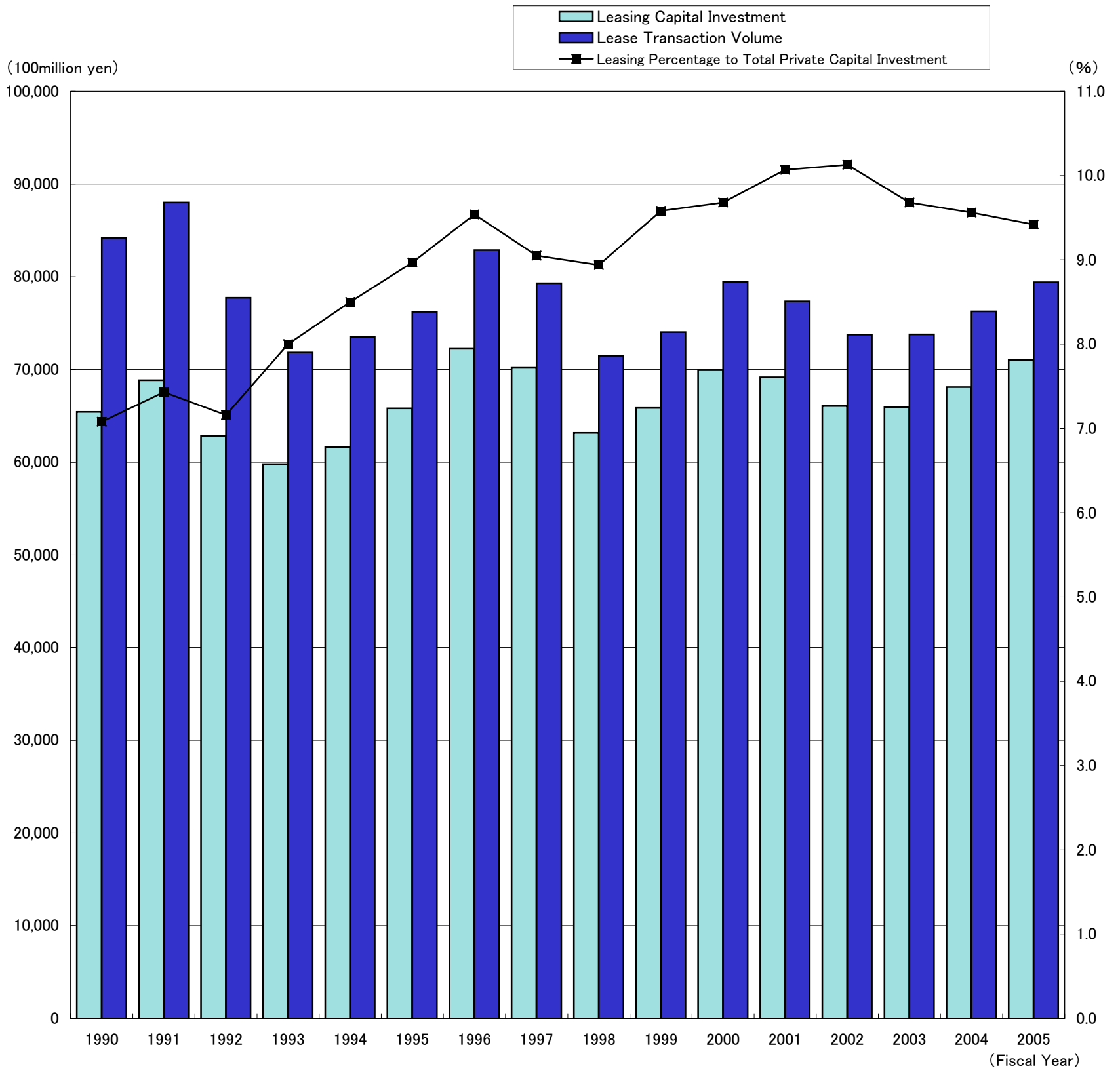
"Small and Medium sized Companies" (companies with capital 0.1 billion yen and less or solo proprietors) marked positive growth in a row of two years (4.2% up), and "Large Companies" (companies with capital over 0.1 billion yen) shifted to positive growth (5.5% up).

"Manufacturing Sector" (6.6% up) has showed the first positive growth since FY 2000, and "Non- Manufacturing Sector" (3.6% up) has been on the increase in a row of three years. In regard to Manufacturing Sector, "Textile, Wood, Pulp" (24.1% up) has indicated a notable increase. "General, Electrical, Communication, Transport Machinery", which has big market share, has also marked steady growth. In regard to "Non-Manufacturing Sector", "Information and Communications" (20.1% up) and "Medical and Welfare Service" (20.9% up) have highly risen, while "Financing and Insurance" (2.7% down) and "Other Service" (2.1% down) have fallen into negative growth.

### Lease Statistics (April 2006)

Lease transaction volume in April 2006 is 681.0 billion yen, decreased by 7.4%, which indicates negative growth in a row of two months. Medical Equipment (24.0% up), Factory Equipment (17.6% up), and Office Equipment (17.4% up) have extremely increased. On the other hand, Information and Communication Equipment (14.2% down), Industrial Equipment (17.6% down), and Commercial and Service Equipment (8.2% down) has showed negative growth.

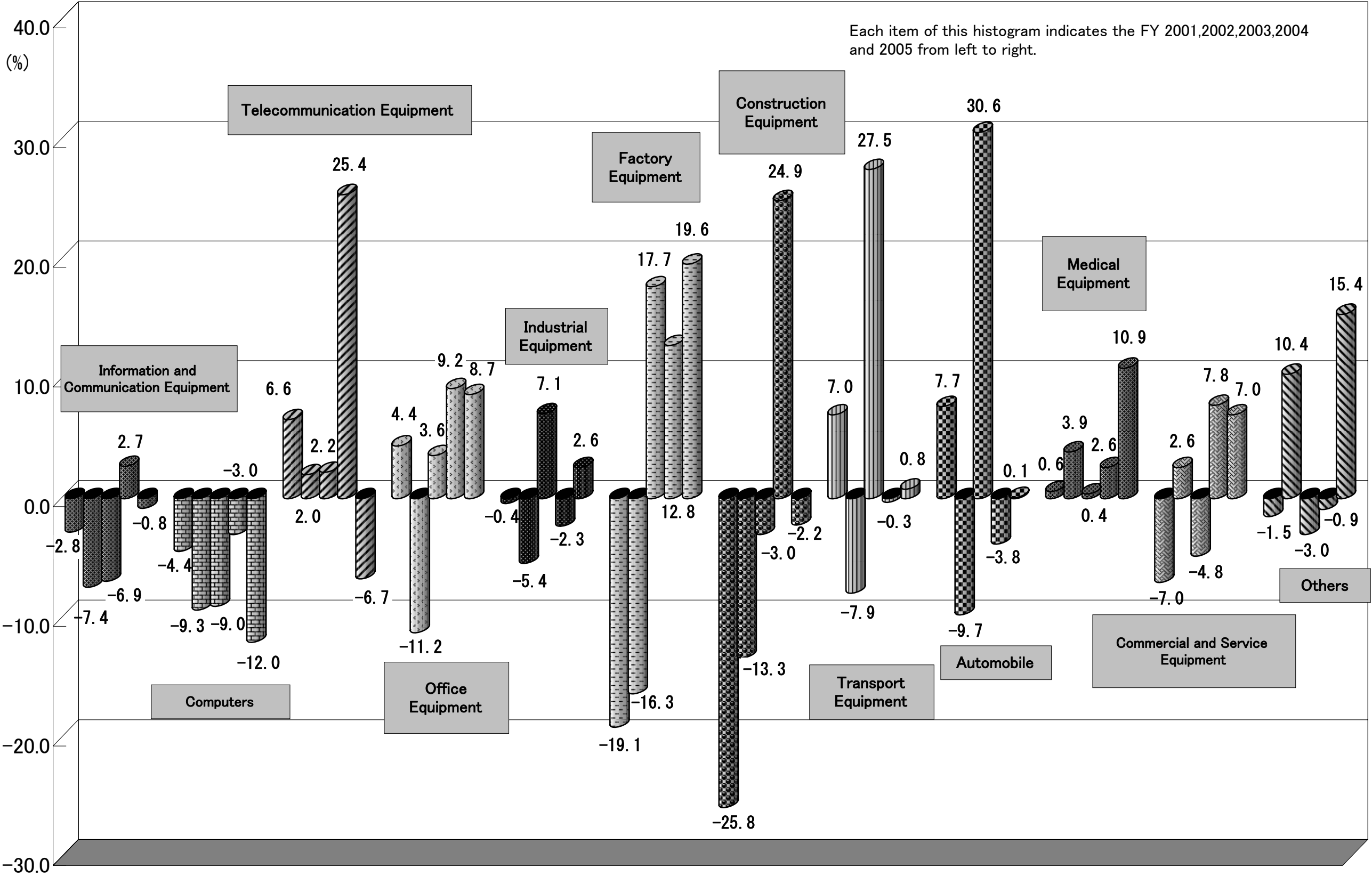
*Trends in Lease Transaction Volume, Leasing Capital Investment and Leasing Percentage to Total Private Capital Investment*



Fiscal Year	1990	1991	1992	1993	1994	1995	1996	1997	1998	1999	2000	2001	2002	2003	2004	2005
Lease Transaction Volume (100million yen)	84,152	88,016	77,742	71,825	73,497	76,214	82,867	79,304	71,445	74,024	79,457	77,337	73,743	73,778	76,252	79,413
Yearly Change (%)	119.1	104.6	88.3	92.4	102.3	103.7	108.7	95.7	90.1	103.6	107.3	97.3	95.4	100.0	103.4	104.1
Leasing Capital investment (100 million yen)	65,420	68,843	62,813	59,780	61,631	65,804	72,238	70,180	63,150	65,862	69,922	69,148	66,052	65,917	68,086	71,017
Yearly Change (%)	113.7	105.2	91.2	95.2	103.1	106.8	109.8	97.2	90.0	104.3	106.2	98.9	95.5	99.8	103.3	104.3
Leasing Percentage to Total Private Capital Investment(%)	7.08	7.43	7.16	8.00	8.50	8.97	9.54	9.05	8.94	9.58	9.68	10.07	10.13	9.68	9.56	9.42
Corporation Reserched	316	324	327	327	335	336	338	344	329	314	304	283	272	262	258	259

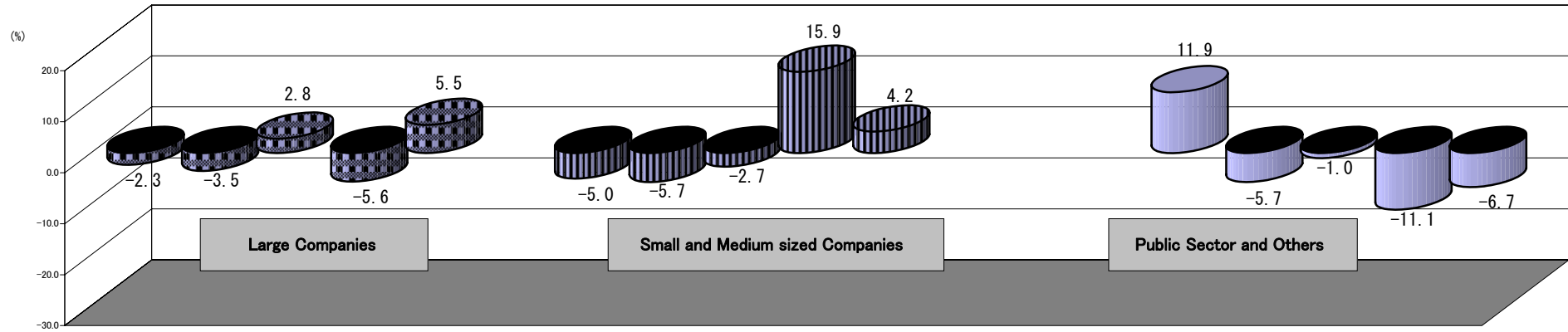
※Total Private Capital Investment, based upon nominal value, is researched by Cabinet Office. The figures in FY 2005 is preliminary one(released on May 19).

# Lease Transaction Volume by Type of Equipment - Yearly Change (%)



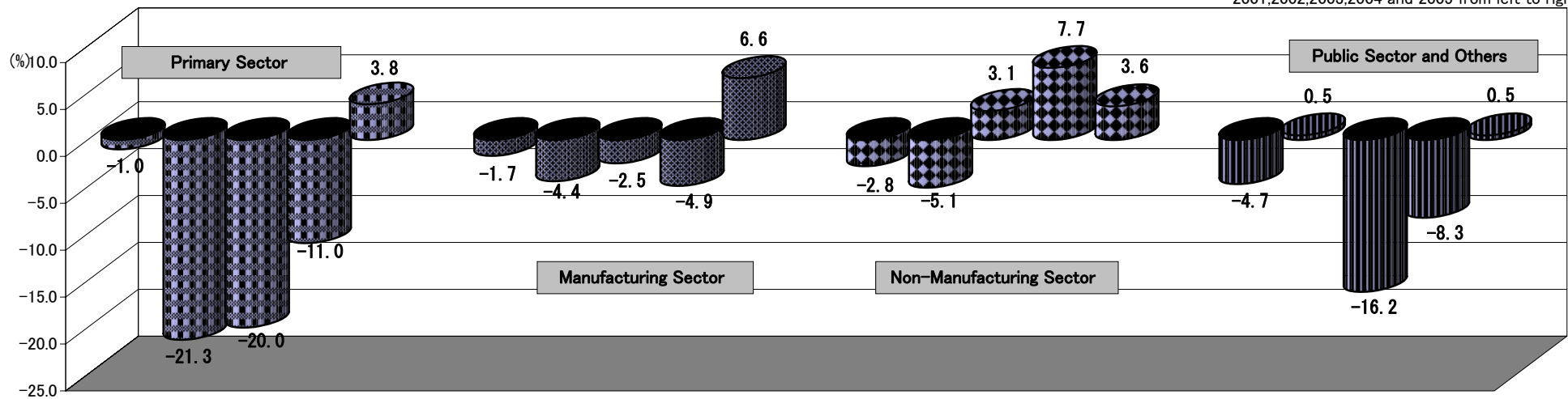
**Lease Transaction Volume by Size of Lessee - Yearly Change (%)**

Each item of this histogram indicates the FY 2001,2002,2003,2004 and 2005 from left to



**Lease Transaction Volume by Type of Bussiness of Lessee - Yearly Cange (%)**

Each item of this histogram indicates the FY 2001,2002,2003,2004 and 2005 from left to right.



(note) The yearly change of Non-Manufacturing Sector in FY 2004 is calculated from the total volume of Non-Manufacturing Sector and Construction Sector.

Manufacturing Sector		Yearly Change(%)
(1) Foods		-1.4
(2) Textile, Wood, Pulp		24.1
(3) Chemical, Oil, Plastic Product		8.4
(4) Iron and Steel, Ferrous and Non-ferrous Metal		8.9
(5) General, Electrical, Communication, Transport Machinery		7.8
(6) Others		-0.8

Non-Manufacturing Sector		Yearly Change(%)
(1) Electricity, Gas, Heat, Water		-23.8
(2) Information and Communications		20.1
(3) Transport		9.0
(4) Wholesale and Retail		2.7
(5) Financing and Insurance		-2.7
(6) Real estate		11.1
(7) Restaurant Lodging		15.8
(8) Medical and Welfare service		20.9
(9) Other Service		20.1

## Trends in Lease Transaction Volume, Leasing Capital Investment and Leasing Percentage to Total Private Capital Investment

(Unit: 100 million yen, %)

Fiscal Year	Lease Transaction Volume		Leasing Capital Investment		Total Private Capital Investment		Leasing Percentage (B)/(C)
	(A)	Yearly Change	(B)	Yearly Change	(C)	Yearly Change	
1963	7	—	—	—	46,702	—	—
1964	40	571.4	—	—	54,670	117.1	—
1965	67	167.5	—	—	50,883	93.1	—
1966	109	162.7	—	—	65,160	128.1	—
1967	290	266.1	—	—	84,691	130.0	—
1968	450	155.2	—	—	103,499	122.2	—
1969	1,200	266.7	—	—	135,607	131.0	—
1970	2,106	175.5	—	—	156,685	115.5	—
1971	2,793	132.6	—	—	152,967	97.6	—
1972	3,721	133.2	—	—	168,937	110.4	—
1973	5,279	141.9	—	—	224,299	132.8	—
1974	5,290	100.2	—	—	245,518	109.5	—
1975	5,621	106.3	—	—	243,739	99.3	—
1976	8,127	144.6	—	—	256,077	105.1	—
1977	8,604	105.9	—	—	264,534	103.3	—
1978	10,566	122.8	7,820	—	293,354	110.9	2.67
1979	14,611	138.3	10,330	132.2	340,188	116.0	3.04
1980	15,744	107.8	11,550	111.8	396,916	—	2.91
1981	19,327	122.8	14,342	124.2	413,133	104.1	3.47
1982	23,966	124.0	18,872	131.6	420,096	101.7	4.49
1983	29,927	124.9	23,262	123.3	423,719	100.9	5.49
1984	36,758	122.8	28,843	124.0	482,074	113.8	5.98
1985	43,225	117.6	33,520	116.2	540,780	112.2	6.20
1986	47,575	110.1	37,636	112.3	563,666	104.2	6.68
1987	52,967	111.3	42,089	111.8	601,061	106.6	7.00
1988	67,170	126.8	52,226	124.1	715,828	119.1	7.30
1989	70,649	105.2	57,540	110.2	805,375	112.5	7.14
1990	84,152	119.1	65,420	113.7	923,414	114.7	7.08
1991	88,016	104.6	68,843	105.2	926,641	100.3	7.43
1992	77,742	88.3	62,813	91.2	877,558	94.7	7.16
1993	71,825	92.4	59,780	95.2	746,865	85.1	8.00
1994	73,497	102.3	61,631	103.1	725,439	97.1	8.50
1995	76,214	103.7	65,804	106.8	733,655	101.1	8.97
1996	82,867	108.7	72,238	109.8	757,351	103.2	9.54
1997	79,304	95.7	70,180	97.2	775,794	102.4	9.05
1998	71,445	90.1	63,150	90.0	706,463	91.1	8.94
1999	74,024	103.6	65,862	104.3	687,369	97.3	9.58
2000	79,457	107.3	69,922	106.2	722,642	105.1	9.68
2001	77,337	97.3	69,148	98.9	686,910	95.1	10.07
2002	73,743	95.4	66,052	95.5	652,164	94.9	10.13
2003	73,778	100.0	65,917	99.8	680,857	104.4	9.68
2004	76,252	103.4	68,086	103.3	712,222	104.6	9.56
2005	79,413	104.1	71,017	104.3	754,238	105.9	9.42

※ Total Private Capital Investment, based upon nominal value, is researched by the Cabinet Office.

The figures in FY 2005 is the preliminary one (released on May 19).

## Trends in Lease Transaction Volume by Type of Equipment

(Unit: in 100 million yen)

	FY 2002		FY 2003		FY 2004		FY 2005		Yearly Change				
	Leasing Volume	Component Ratio(%)	Leasing Volume	Component Ratio (%)	Leasing Volume	Component Ratio (%)	Leasing Volume	Component Ratio (%)	02/01	03/02	04/03	05/04	
1	Information and Communication Equipment	28,463	38.6	26,488	35.9	27,206	35.7	26,980	34.0	92.6	93.1	102.7	99.2
	Computer Hardware	23,277	31.6	21,190	28.7	16,782	22.0	14,772	18.6	90.7	91.0	97.0	88.0
	Computer Software	—	—	—	—	3,780	5.0	6,007	7.6	—	—	—	158.9
	Telecommunication Equipment	5,187	7.0	5,299	7.2	6,644	8.7	6,201	7.8	102.0	102.2	125.4	93.3
2	Office Equipment	5,871	8.0	6,085	8.2	6,645	8.7	7,223	9.1	88.8	103.6	109.2	108.7
3	Industrial Equipment	9,719	13.2	10,412	14.1	10,176	13.3	10,443	13.1	94.6	107.1	97.7	102.6
4	Factory Equipment	1,535	2.1	1,806	2.4	2,037	2.7	2,436	3.1	83.7	117.7	112.8	119.6
5	Construction Equipment	1,397	1.9	1,355	1.8	1,692	2.2	1,656	2.1	86.7	97.0	124.9	97.8
6	Transport Equipment	5,773	7.8	7,362	10.0	7,342	9.6	7,403	9.3	92.1	127.5	99.7	100.8
	Automobile	5,005	6.8	6,535	8.9	6,289	8.2	6,298	7.9	90.3	130.6	96.2	100.1
	Vessel	55	0.1	49	0.1	40	0.1	18	0.0	41.4	88.9	81.5	46.0
7	Medical Equipment	3,429	4.7	3,445	4.7	3,535	4.6	3,920	4.9	103.9	100.4	102.6	110.9
8	Commercial and Service Equipment	11,407	15.5	10,862	14.7	11,711	15.4	12,533	15.8	102.6	95.2	107.8	107.0
	Commercial Equipment	6,515	8.8	6,190	8.4	6,511	8.5	6,610	8.3	103.2	95.0	105.2	101.5
9	Others	6,147	8.3	5,964	8.1	5,908	7.7	6,819	8.6	110.4	97.0	99.1	115.4
	Physical and Chemical Equipment	1,802	2.4	937	1.3	1,035	1.4	850	1.1	157.6	52.0	110.5	82.2
Total		73,743	100.0	73,778	100.0	76,252	100.0	79,413	100.0	95.4	100.0	103.4	104.1
Corporations researched		272		262		258		259					

(note) The yearly change 04/03 of "Computer Hardware" is calculated from the total amount of "Computer Hardware" and "Computer Software" in FY 2004.

## Trends in Lease Transaction Volume by Size of Lessee

(Unit: in 100 million yen)

		FY 2002		FY 2003		FY 2004		FY 2005		Yearly Change			
		Leasing Volume	Component Ratio(%)	Leasing Volume	Component Ratio (%)	Leasing Volume	Component Ratio (%)	Leasing Volume	Component Ratio (%)	02/01	03/02	04/03	05/04
1	Large Companies	35,603	48.3	36,582	49.6	34,539	45.3	36,437	45.9	96.5	102.8	94.4	105.5
2	Small and Medium Sized Companies	32,929	44.7	32,035	43.4	37,124	48.7	38,695	48.7	94.3	97.3	115.9	104.2
3	Public Sector and Others	5,211	7.1	5,160	7.0	4,589	6.0	4,281	5.4	94.3	99.0	88.9	93.3
Total		73,743	100.0	73,778	100.0	76,252	100.0	79,413	100.0	95.4	100.0	103.4	104.1

## Trends in Lease Transaction Volume by Lessee's Business Type

(Unit: in 100 million yen)

		FY 2002		FY 2003		FY 2004		FY 2005		Yearly Change			
		Leasing Volume	Component Ratio(%)	Leasing Volume	Component Ratio (%)	Leasing Volume	Component Ratio (%)	Leasing Volume	Component Ratio (%)	02/01	03/02	04/03	05/04
1	Primary Sector	467	0.6	373	0.5	332	0.4	345	0.4	78.7	80.0	89.0	103.8
2	Construction Sector	—	—	—	—	3,403	4.5	3,541	4.5	—	—	—	104.0
3	Manufacturing Sector	19,518	26.5	19,023	25.8	18,096	23.7	19,289	24.3	95.6	97.5	95.1	106.6
	Foods	—	—	—	—	2,564	3.4	2,527	3.2	—	—	—	98.6
	Textile, Wood, Pulp	—	—	—	—	1,457	1.9	1,809	2.3	—	—	—	124.1
	Chemical, Oil, Plastic Product	—	—	—	—	1,645	2.2	1,784	2.2	—	—	—	108.4
	Iron and Steel, Ferrous and Non-ferrous Metal	—	—	—	—	1,794	2.4	1,953	2.5	—	—	—	108.9
	General, Electrical, Communication, Transport Machinery	—	—	—	—	7,756	10.2	8,358	10.5	—	—	—	107.8
	Others	—	—	—	—	2,880	3.8	2,859	3.6	—	—	—	99.2
4	Non-manufacturing Sector	48,352	65.6	49,854	67.6	50,271	65.9	52,067	65.6	94.9	103.1	107.7	103.6
	Electricity, Gas, Heat, Water	—	—	—	—	716	0.9	546	0.7	—	—	—	76.2
	Information and Communications	—	—	—	—	2,757	3.6	3,312	4.2	—	—	—	120.1
	Transport	—	—	—	—	3,139	4.1	3,421	4.3	—	—	—	109.0
	Wholesale and Retail	—	—	—	—	14,101	18.5	14,477	18.2	—	—	—	102.7
	Financing and Insurance	—	—	—	—	3,522	4.6	3,425	4.3	—	—	—	97.3
	Real estate	—	—	—	—	1,670	2.2	1,856	2.3	—	—	—	111.1
	Restaurant, Lodging	—	—	—	—	1,685	2.2	1,952	2.5	—	—	—	115.8
	Medical and Welfare Service	—	—	—	—	3,824	5.0	4,622	5.8	—	—	—	120.9
	Other Service	—	—	—	—	18,857	24.7	18,457	23.2	—	—	—	97.9
5	Public Sector and Others	5,406	7.3	4,528	6.1	4,150	5.4	4,172	5.3	100.5	83.8	91.7	100.5
Total		73,743	100.0	73,778	100.0	76,252	100.0	79,413	100.0	95.4	100.0	103.4	104.1

(note) As classification of type of business was changed in FY 2004, the detail of manufacturing and Non-Manufacturing Sector in FY 2002 and 2003 is omitted.

The yearly change of Non-Manufacturing Sector in FY 2004 is calculated from the total volume of Non-Manufacturing Sector and Construction Sector.

## Leasing Volume by Type of Equipment (Apr. 2006)

		Leasing cases	Component Ratio (%)	Year-on-year Change (%)	Leasing Volume (in million yen)	Component Ratio (%)	Year-on-year Change (%)
1	Information and Communication Equipment	103,778	43.0	94.2	249,149.8	36.6	85.8
	Computer Hardware	( 54,330 )	( 22.5 )	( 90.2 )	( 136,752.2 )	( 20.1 )	( 86.1 )
	Computer Software	( 15,918 )	( 6.6 )	( 114.3 )	( 67,809.5 )	( 10.0 )	( 90.1 )
	Telecommunication Equipment	( 33,530 )	( 13.9 )	( 93.2 )	( 44,588.1 )	( 6.5 )	( 79.2 )
2	Office Equipment	50,106	20.7	118.1	68,331.7	10.0	117.4
3	Industrial Equipment	7,288	3.0	106.5	72,783.6	10.7	82.4
4	Factory Equipment	999	0.4	94.3	17,477.2	2.6	117.6
5	Construction Equipment	1,055	0.4	99.0	10,311.6	1.5	91.7
6	Transport Equipment	23,289	9.6	99.6	62,534.0	9.2	111.1
	Automobile	( 21,436 )	( 8.9 )	( 101.1 )	( 52,122.5 )	( 7.7 )	( 110.8 )
	Vessel	( 10 )	( 0.0 )	( 250.0 )	( 476.1 )	( 0.1 )	( 6,612.5 )
7	Medical Equipment	9,306	3.9	114.6	40,692.1	6.0	124.0
8	Commercial and Service Equipment	29,526	12.2	101.9	99,769.7	14.6	91.8
	Commercial Equipment	( 20,457 )	( 8.5 )	( 97.9 )	( 54,237.4 )	( 8.0 )	( 100.0 )
9	Others	16,163	6.7	151.0	59,987.9	8.8	80.2
	Physical and Chemical Equipment	( 1,710 )	( 0.7 )	( 107.8 )	( 7,651.3 )	( 1.1 )	( 94.7 )
Total		241,510	100.0	103.8	681,037.6	100.0	92.6

【Corporations researched: 254】



## Changes in Lease Transaction Volume

Unit: in 100 Million Yen, Yearly Changes: Parenthesized

	Total	Information and Communication Equipment				Office Equipment	Industry Equipment	Factory Equipment	Construction Equipment	Transport Equipment			Medical Equipment	Commercial and Service Equipment		Others		
		Computer Hardware	Computer Software	Telecommunication Equipment	Automobile					Vessel	Commercial Equipment	Physical and Chemical Equipment						
Calendar Year	2003	73,303 (▲ 2.9)	26,193 (▲ 13.1)	20,948 (▲ 15.8)	- ( - )	5,245 (▲ 0.7)	5,797 (▲ 3.5)	10,158 ( 5.6)	1,599 ( 5.3)	1,295 (▲ 10.7)	7,116 ( 14.9)	6,255 ( 16.4)	48 (▲ 58.1)	3,446 ( 4.8)	11,109 (▲ 2.8)	6,330 (▲ 2.8)	6,591 ( 13.0)	1,052 ( 1.0)
	2004	75,759 ( 3.3)	26,872 ( 2.6)	21,121 ( 0.8)	- ( - )	5,751 ( 9.6)	6,700 ( 15.6)	10,713 ( 5.5)	2,037 ( 27.4)	1,571 ( 21.3)	7,335 ( 3.1)	6,403 ( 2.4)	30 (▲ 38.2)	3,472 ( 0.8)	11,405 ( 2.7)	6,301 (▲ 0.5)	5,653 (▲ 14.2)	993 (▲ 5.6)
	2005	77,336 ( 2.1)	27,194 ( 1.2)	15,800 (▲ 2.1)	4,879 ( - )	6,516 ( 13.3)	6,034 (▲ 9.9)	10,005 (▲ 6.6)	2,296 ( 12.7)	1,621 ( 3.2)	7,755 ( 5.7)	6,446 ( 0.7)	84 ( 185.7)	3,800 ( 9.5)	12,345 ( 8.2)	6,578 ( 4.4)	6,285 ( 11.2)	911 (▲ 8.3)
Fiscal Year (Final Figures)	2003	73,778 ( 0.0)	26,488 (▲ 6.9)	21,190 (▲ 9.0)	- ( - )	5,299 ( 2.2)	6,085 ( 3.6)	10,412 ( 7.1)	1,806 ( 17.7)	1,355 (▲ 3.0)	7,362 ( 27.5)	6,535 ( 30.6)	49 (▲ 11.1)	3,445 ( 0.4)	10,862 (▲ 4.8)	6,190 (▲ 5.0)	5,964 (▲ 3.0)	937 (▲ 48.0)
	2004	76,252 ( 3.4)	27,206 ( 2.7)	16,782 (▲ 3.0)	3,780 ( - )	6,644 ( 25.4)	6,645 ( 9.2)	10,176 (▲ 2.3)	2,037 ( 12.8)	1,692 ( 24.9)	7,342 (▲ 0.3)	6,289 (▲ 3.8)	40 (▲ 18.5)	3,535 ( 2.6)	11,711 ( 7.8)	6,511 ( 5.2)	5,908 (▲ 0.9)	1,035 ( 10.5)
	2005	79,413 ( 4.1)	26,980 (▲ 0.8)	14,772 (▲ 12.0)	6,007 ( 58.9)	6,201 (▲ 6.7)	7,223 ( 8.7)	10,443 ( 2.6)	2,436 ( 19.6)	1,656 (▲ 2.2)	7,403 ( 0.8)	6,298 ( 0.1)	18 (▲ 54.0)	3,920 ( 10.9)	12,533 ( 7.0)	6,610 ( 1.5)	6,819 ( 15.4)	850 (▲ 17.8)
Half Year	'04 4-9	37,576 ( 3.7)	13,030 ( 0.2)	10,078 (▲ 2.6)	- ( - )	2,952 ( 11.4)	3,375 ( 15.0)	5,212 ( 5.3)	960 ( 25.6)	693 ( 19.0)	3,677 ( 1.4)	3,155 (▲ 1.1)	22 (▲ 47.1)	1,784 ( 1.7)	5,917 ( 5.9)	3,346 ( 1.6)	2,928 (▲ 4.1)	509 ( 2.0)
	10-3	38,432 ( 3.6)	14,095 ( 5.4)	10,756 ( 0.3)	- ( - )	3,339 ( 26.0)	3,091 (▲ 1.8)	5,041 (▲ 6.4)	1,095 ( 11.0)	909 ( 17.9)	3,650 ( 0.5)	3,100 (▲ 5.0)	21 ( 120.2)	1,756 ( 5.6)	5,782 ( 9.6)	3,184 ( 11.5)	3,023 ( 4.8)	506 ( 4.8)
	'05 4-9	38,380 ( 2.1)	13,190 ( 1.2)	7,140 ( 0.1)	2,948 ( - )	3,102 ( 5.1)	3,046 (▲ 9.7)	5,098 (▲ 2.2)	1,126 ( 17.3)	697 ( 0.6)	3,854 ( 4.8)	3,248 ( 3.0)	63 ( 190.3)	1,913 ( 7.2)	6,286 ( 6.3)	3,383 ( 1.1)	3,171 ( 8.3)	425 (▲ 16.6)
	10-3	39,752 ( 3.4)	13,643 (▲ 3.2)	7,698 (▲ 0.4)	3,014 ( - )	2,931 (▲ 12.2)	3,025 (▲ 2.1)	5,391 ( 7.0)	1,316 ( 21.3)	958 ( 5.4)	4,025 ( 10.3)	3,385 ( 9.2)	5 (▲ 74.8)	1,937 ( 10.3)	6,163 ( 6.6)	3,108 (▲ 2.4)	3,294 ( 8.9)	452 (▲ 10.7)
Quarter Year	'04 4-6	18,090 ( 0.8)	6,487 (▲ 4.3)	5,048 (▲ 7.3)	- ( - )	1,439 ( 8.4)	1,689 ( 12.7)	2,362 ( 2.6)	432 ( 22.8)	289 ( 11.0)	1,719 ( 6.9)	1,473 ( 7.4)	5 (▲ 85.2)	875 (▲ 3.7)	2,817 ( 2.0)	1,653 ( 1.7)	1,420 (▲ 4.2)	235 (▲ 16.2)
	7-9	19,486 ( 6.5)	6,543 ( 5.1)	5,030 ( 2.6)	- ( - )	1,513 ( 14.4)	1,686 ( 17.4)	2,851 ( 7.7)	528 ( 27.9)	404 ( 25.6)	1,958 (▲ 3.0)	1,682 (▲ 7.6)	16 ( 181.6)	910 ( 7.4)	3,100 ( 9.7)	1,693 ( 1.4)	1,508 (▲ 3.9)	274 ( 25.6)
	10-12	18,852 ( 6.0)	6,505 ( 7.7)	5,035 ( 6.7)	- ( - )	1,470 ( 11.3)	1,604 ( 12.4)	2,568 ( 4.7)	523 ( 23.3)	493 ( 28.0)	1,745 ( 1.6)	1,504 (▲ 1.1)	0 (▲ 76.3)	851 ( 2.8)	3,073 ( 7.5)	1,681 ( 6.4)	1,490 (▲ 9.6)	235 ( 0.4)
	1-3	19,580 ( 1.3)	7,590 ( 3.4)	5,721 (▲ 4.8)	- ( - )	1,869 ( 40.6)	1,487 (▲ 13.6)	2,473 (▲ 15.7)	563 ( 1.6)	416 ( 7.9)	1,905 (▲ 0.4)	1,597 (▲ 8.5)	20 ( 172.8)	905 ( 8.2)	2,708 ( 12.2)	1,503 ( 17.9)	1,534 ( 24.2)	271 ( 9.0)
	'05 4-6	18,606 ( 2.9)	6,606 ( 1.8)	3,572 ( 1.0)	1,526 ( - )	1,508 ( 4.8)	1,570 (▲ 7.0)	2,121 (▲ 10.2)	499 ( 15.7)	311 ( 7.6)	1,801 ( 4.7)	1,532 ( 4.0)	12 ( 122.6)	947 ( 8.3)	3,186 ( 13.1)	1,733 ( 4.9)	1,564 ( 10.1)	213 (▲ 9.7)
	7-9	19,774 ( 1.5)	6,584 ( 0.6)	3,568 (▲ 0.8)	1,423 ( - )	1,594 ( 5.3)	1,476 (▲ 12.4)	2,976 ( 4.4)	627 ( 18.7)	385 (▲ 4.5)	2,053 ( 4.9)	1,716 ( 2.0)	51 ( 211.7)	966 ( 6.2)	3,101 ( 0.0)	1,650 (▲ 2.5)	1,606 ( 6.5)	212 (▲ 22.5)
	10-12	19,375 ( 2.8)	6,414 (▲ 1.4)	3,476 (▲ 3.3)	1,393 ( - )	1,545 ( 5.1)	1,501 (▲ 6.4)	2,435 (▲ 5.2)	607 ( 16.1)	509 ( 3.2)	1,996 ( 14.4)	1,602 ( 6.5)	1 ( 173.2)	982 ( 15.4)	3,350 ( 9.0)	1,692 ( 0.7)	1,581 ( 6.1)	215 (▲ 8.7)
	1-3	20,378 ( 4.1)	7,229 (▲ 4.7)	4,222 ( 2.1)	1,621 ( - )	1,386 (▲ 25.8)	1,523 ( 2.4)	2,956 ( 19.6)	709 ( 26.0)	450 ( 8.1)	2,029 ( 6.5)	1,783 ( 11.7)	4 (▲ 80.5)	955 ( 5.5)	2,813 ( 3.9)	1,416 (▲ 5.8)	1,713 ( 11.7)	238 (▲ 12.4)
Monthly	'05 4	7,356 ( 6.4)	2,904 ( 5.4)	1,589 ( 4.7)	753 ( - )	563 ( 8.7)	582 (▲ 10.8)	883 ( 14.9)	149 ( 7.1)	112 (▲ 3.5)	563 (▲ 6.6)	470 (▲ 9.0)	0 (▲ 98.0)	328 ( 5.3)	1,086 ( 11.6)	542 (▲ 5.5)	748 ( 26.1)	81 (▲ 6.0)
	5	5,198 (▲ 3.0)	1,678 (▲ 10.6)	891 (▲ 13.0)	361 ( - )	426 (▲ 3.0)	446 (▲ 7.1)	582 (▲ 9.1)	152 ( 15.0)	93 ( 13.0)	554 ( 8.3)	463 ( 3.5)	10 ( 10,492.6)	295 ( 7.0)	1,038 ( 12.5)	625 ( 17.5)	361 (▲ 17.1)	61 (▲ 12.4)
	6	6,053 ( 4.0)	2,024 ( 9.2)	1,092 ( 9.6)	412 ( - )	519 ( 7.9)	542 (▲ 2.6)	657 (▲ 31.1)	199 ( 23.6)	106 ( 16.9)	684 ( 13.0)	598 ( 17.7)	1 ( 1.4)	324 ( 12.6)	1,062 ( 15.3)	566 ( 3.4)	456 ( 16.1)	71 (▲ 11.2)
	7	6,467 ( 2.3)	2,001 (▲ 3.5)	1,111 ( 1.0)	443 ( - )	446 (▲ 16.6)	480 (▲ 17.1)	1,304 ( 36.4)	190 ( 19.9)	113 ( 3.9)	628 (▲ 3.0)	575 ( 1.7)	0 (▲ 98.7)	269 (▲ 2.7)	1,047 ( 0.7)	577 ( 5.0)	434 (▲ 9.7)	66 (▲ 31.8)
	8	5,661 ( 0.0)	1,870 (▲ 0.6)	984 (▲ 6.7)	354 ( - )	532 ( 18.9)	462 (▲ 9.6)	632 (▲ 14.9)	193 ( 27.3)	107 ( 4.7)	641 ( 22.6)	454 (▲ 0.6)	51 ( 2,482.4)	327 ( 23.0)	1,033 ( 2.3)	532 (▲ 6.1)	396 (▲ 16.5)	67 (▲ 16.1)
	9	7,647 ( 1.9)	2,713 ( 4.8)	1,473 ( 2.0)	625 ( - )	615 ( 16.0)	533 (▲ 10.3)	1,040 (▲ 9.6)	244 ( 11.8)	166 (▲ 14.1)	784 (▲ 0.4)	686 ( 4.1)	1 (▲ 95.4)	370 ( 0.7)	1,020 (▲ 2.8)	541 (▲ 6.2)	776 ( 40.3)	78 (▲ 18.3)
	10	6,640 ( 2.1)	2,610 ( 4.3)	1,502 ( 2.6)	580 ( - )	528 ( 11.5)	519 (▲ 5.7)	736 (▲ 10.5)	202 ( 27.5)	181 ( 6.2)	642 ( 12.4)	510 ( 1.3)	1 ( 9,860.0)	326 ( 8.3)	933 ( 12.5)	491 (▲ 1.6)	490 (▲ 18.0)	77 (▲ 20.8)
	11	5,926 ( 4.0)	1,792 (▲ 8.1)	951 (▲ 9.8)	372 ( - )	469 (▲ 2.7)	460 (▲ 10.0)	772 ( 2.5)	194 ( 22.5)	141 (▲ 8.1)	653 ( 11.3)	538 ( 9.5)	0 ( 700.0)	289 ( 14.3)	969 ( 3.5)	548 ( 3.7)	657 ( 65.8)	55 (▲ 6.5)
	12	6,809 ( 2.4)	2,012 (▲ 2.0)	1,023 (▲ 4.9)	440 ( - )	548 ( 6.5)	523 (▲ 3.7)	926 (▲ 6.6)	211 ( 2.5)	187 ( 10.4)	701 ( 19.4)	554 ( 8.8)	0 ( 0.0)	367 ( 23.6)	1,448 ( 10.7)	653 (▲ 0.1)	434 (▲ 12.5)	82 ( 4.8)
	'06 1	5,557 ( 11.8)	1,891 (▲ 0.3)	1,151 (▲ 0.6)	369 ( - )	370 ( 1.0)	450 ( 14.0)	892 ( 43.4)	153 ( 4.0)	144 ( 31.1)	457 ( 11.8)	411 ( 15.9)	0 (▲ 66.1)	244 (▲ 2.6)	810 ( 0.2)	411 (▲ 4.3)	517 ( 54.0)	52 (▲ 8.7)
	2	5,257 ( 4.7)	1,753 (▲ 3.1)	1,018 ( 6.8)	354 ( - )	381 (▲ 27.3)	425 ( 1.0)	845 ( 17.4)	217 ( 37.3)	122 ( 13.9)	587 ( 14.6)	495 ( 10.9)	1 ( 1,874.1)	248 ( 22.3)	703 ( 3.3)	388 (▲ 2.9)	357 (▲ 13.5)	69 ( 8.3)
	3	9,564 (▲ 0.2)	3,585 (▲ 7.7)	2,052 ( 1.5)	898 ( - )	635 (▲ 35.0)	649 (▲ 3.4)	1,219 ( 7.8)	339 ( 31.7)	183 (▲ 7.7)	986 ( 0.1)	878 ( 10.2)	3 (▲ 83.6)	463 ( 2.5)	1,300 ( 6.6)	617 (▲ 8.5)	840 ( 6.9)	117 (▲ 22.5)
	4	6,810 (▲ 7.4)	2,491 (▲ 14.2)	1,368 (▲ 13.9)	678 (▲ 9.9)	446 (▲ 20.8)	683 ( 17.4)	728 (▲ 17.6)	175 ( 17.6)	103 (▲ 8.3)	625 ( 11.1)	521 ( 10.8)	5 ( 6,512.5)	407 ( 24.0)	998 (▲ 8.2)	542 ( 0.0)	600 (▲ 19.8)	77 (▲ 5.3)

(note) The chart shows the transaction volume of Computer Software, distinguishing from that of Computer Hardware since 2005.