

October 29, 2018

## Lease Statistics (The First Half of FY2018)

The lease transaction volume in the first half of FY2018 (from April 2018 to September 2018) is 2,362.8 billion yen, increased by 3.9% compared with the same period of the previous year.

With regard to the type of equipment on a half year basis, Information and Communication (8.1% up), Industrial Equipment (0.6% up), Factory Equipment (6.0% up), and Transport Equipment (5.9% up) have showed positive growth respectively. On the other hand, Office Equipment (3.9% down), Construction Equipment (13.4% down), Medical Equipment (10.7% down), Commercial and Service Equipment (0.2% down) have showed negative growth respectively.

The lease transaction volume in September 2018 is 517.0 billion yen, increased by 6.5%, compared with the same period of the previous year. The lease transaction volume has turned to positive growth for the first time for the last 2 months. With regard to the type of equipment, Industrial Equipment (36.7% up) has showed a double-digit increase. In addition, Information and Communication Equipment (7.9% up), Transport Equipment (9.5% up), Commercial and Service Equipment (3.0% up) have showed positive growth respectively. On the other hand, Office Equipment (3.1% down), Factory Equipment (14.5% down), Construction Equipment (25.9% down), and Medical Equipment (9.4% down) have showed negative growth respectively.

### Changes in Leasing Transaction Volume (Monthly)

Year, Month	Leasing Cases	Yearly Change (%)	Leasing Volume (in million yen)	Yearly Change (%)
2017, 9	157,365	101.1	485,562.9	92.3
10	149,027	105.3	372,426.3	99.0
11	133,910	100.6	345,604.4	103.7
12	147,443	93.9	409,723.7	90.4
2018, 1	130,369	99.0	344,175.6	99.7
2	123,480	96.3	382,214.7	102.6
3	180,751	93.3	702,335.6	97.8
4	159,577	88.4	424,672.2	102.6
5	144,049	107.8	313,563.8	100.9
6	146,929	91.4	410,384.6	103.4
7	146,671	101.1	374,591.9	109.7
8	133,889	100.0	322,597.7	99.2
9	147,748	93.9	516,982.5	106.5
2018,4 - 2018,9	878,863	96.4	2,362,792.7	103.9

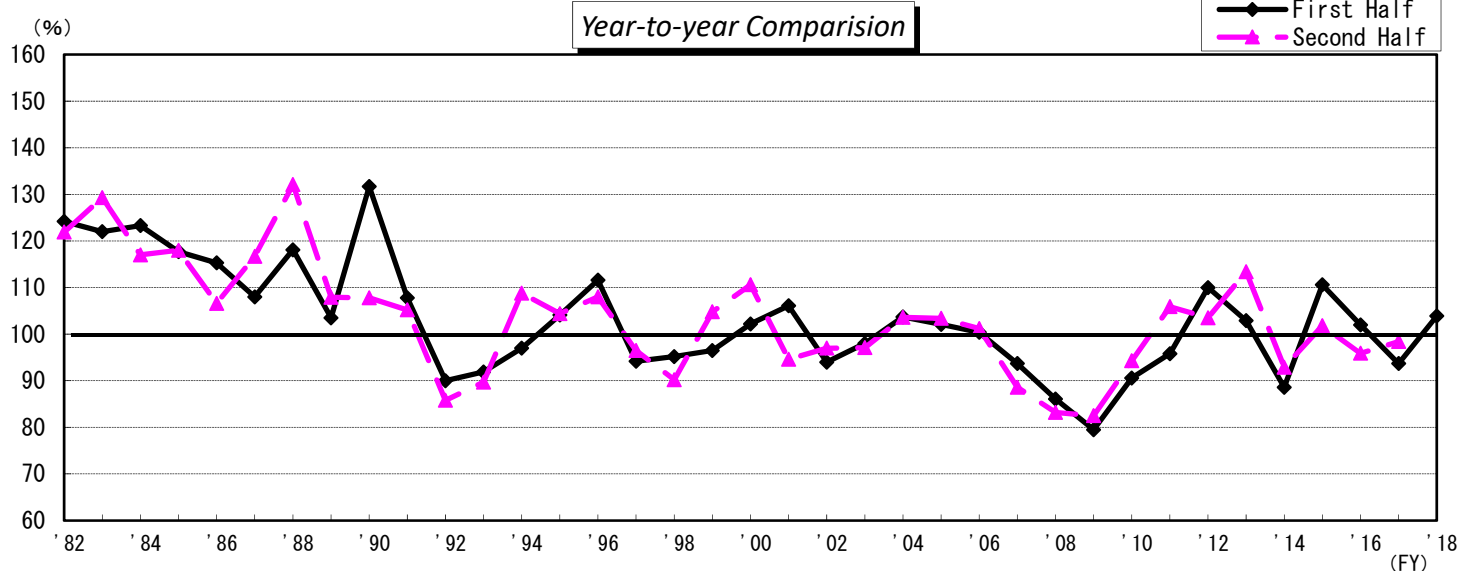
★Corporations researched: 211 (as of September 2018)

# Change in Total of Lease Transaction Volume (Separated by Half)

(in 100 million yen %)

Fiscal Year	First Half (April-September)			Second Half (October-March)		
	Leasing Volume	Yearly Change	Half-yearly Change	Leasing Volume	Yearly Change	Half-yearly Change
1972	1,489	—	—	2,079	—	139.6
1973	2,649	177.9	127.4	2,608	125.4	98.4
1974	2,713	102.4	104.0	2,670	102.4	98.4
1975	2,844	104.8	106.5	2,831	106.0	99.5
1976	(regular member)	3,131	110.1	3,612	127.6	115.4
	(total)	3,629	—	4,280	—	117.9
1977	4,200	115.7	98.1	4,415	103.1	105.1
1978	5,227	124.5	118.4	5,381	121.9	102.9
1979	6,863	131.3	127.5	7,484	139.1	109.0
1980	7,766	113.2	103.8	7,850	104.9	101.1
1981	9,458	121.8	120.5	9,996	127.3	105.7
1982	11,751	124.2	117.6	12,181	121.9	103.7
1983	14,333	122.0	117.7	15,755	129.3	109.9
1984	17,666	123.3	112.1	18,428	117.0	104.3
1985	20,800	117.7	112.9	21,736	118.0	104.5
1986	23,992	115.3	110.4	23,172	106.6	96.6
1987	25,901	108.0	111.8	27,033	116.7	104.4
1988	30,595	118.1	113.2	35,723	132.1	116.8
1989	31,659	103.5	88.6	38,553	107.9	121.8
1990	41,700	131.7	108.2	41,579	107.8	99.7
1991	44,960	107.8	108.1	43,745	105.2	97.3
1992	40,474	90.0	92.5	37,532	85.8	92.7
1993	37,185	91.9	99.1	33,684	89.7	90.6
1994	36,082	97.0	107.1	36,643	108.8	101.6
1995	37,554	104.1	102.5	38,249	104.4	101.9
1996	41,907	111.6	109.6	41,290	108.0	98.5
1997	39,474	94.2	95.6	39,860	96.5	101.0
1998	37,595	95.2	94.3	35,944	90.2	95.6
1999	36,298	96.5	101.0	37,661	104.8	103.8
2000	37,081	102.2	98.5	41,644	110.6	112.3
2001	39,356	106.1	94.5	39,405	94.6	100.1
2002	36,996	94.0	93.9	38,224	97.0	103.3
2003	36,252	98.0	94.8	37,112	97.1	102.4
2004	37,576	103.7	101.3	38,432	103.6	102.3
2005	38,380	102.1	99.9	39,752	103.4	103.6
2006	38,541	100.4	97.0	40,215	101.2	104.3
2007	36,119	93.7	89.8	35,627	88.6	98.6
2008	31,091	86.1	87.3	29,654	83.2	95.4
2009	24,712	79.5	83.3	24,461	82.5	99.0
2010	22,398	90.6	91.6	23,064	94.3	103.0
2011	21,463	95.8	93.1	24,423	105.9	113.8
2012	23,616	110.0	96.7	25,284	103.5	107.1
2013	24,310	102.9	96.1	28,661	113.4	117.9
2014	21,533	88.6	75.1	26,618	92.9	123.6
2015	23,807	110.6	89.4	27,084	101.8	113.8
2016	24,271	102.0	89.6	25,979	95.9	107.0
2017	22,735	93.7	87.5	25,565	98.4	112.4
2018	23,628	103.9	92.4			

Note: Leasing volume before FY 1976 does not include that of associated members.



## Leasing Volume by Type of Equipment (Sep. 2018)

		Leasing cases	Component Ratio (%)	Year-on-year Change (%)	Leasing Volume (in million yen)	Component Ratio (%)	Year-on-year Change (%)
1	Information and Communication Equipment	56,843	38.5	91.1	175,998.7	34.0	107.9
	Computer Hardware	( 35,120 )	( 23.8 )	( 91.4 )	( 94,518.6 )	( 18.3 )	( 113.9 )
	Computer Software	( 6,072 )	( 4.1 )	( 89.8 )	( 35,714.7 )	( 6.9 )	( 110.7 )
	Telecommunication Equipment	( 15,651 )	( 10.6 )	( 91.0 )	( 45,765.4 )	( 8.9 )	( 95.5 )
2	Office Equipment	27,665	18.7	95.5	37,910.0	7.3	96.9
3	Industrial Equipment	3,612	2.4	78.6	65,854.8	12.7	136.7
4	Factory Equipment	604	0.4	88.0	13,129.0	2.5	85.5
5	Construction Equipment	1,239	0.8	81.4	12,449.1	2.4	74.1
6	Transport Equipment	19,340	13.1	99.5	63,701.0	12.3	109.5
	Automobile	( 17,749 )	( 12.0 )	( 100.3 )	( 58,364.1 )	( 11.3 )	( 110.7 )
	Vessel	( 16 )	( 0.0 )	( 145.5 )	( 275.8 )	( 0.1 )	( 531.4 )
7	Medical Equipment	5,402	3.7	101.9	21,811.0	4.2	90.6
8	Commercial and Service Equipment	22,528	15.2	93.6	56,579.9	10.9	103.0
	Commercial Equipment	( 18,502 )	( 12.5 )	( 94.7 )	( 36,846.6 )	( 7.1 )	( 94.8 )
9	Others	10,515	7.1	100.9	69,549.0	13.5	105.7
	Physical and Chemical Equipment	( 1,712 )	( 1.2 )	( 101.6 )	( 6,411.5 )	( 1.2 )	( 103.0 )
Total		147,748	100.0	93.9	516,982.5	100.0	106.5

【Corporations researched: 210】

## Leasing Volume by Type of Equipment (Apr. 2018 - Sep. 2018)

		Leasing cases	Component Ratio (%)	Yearly Change (%)	Leasing Volume (in million yen)	Component Ratio (%)	Yearly Change (%)
1	Information and Communication Equipment	354,313	40.3	99.2	745,365.5	31.5	108.1
	Computer Hardware	( 232,710 )	( 26.5 )	( 101.8 )	( 416,632.3 )	( 17.6 )	( 115.9 )
	Computer Software	( 32,685 )	( 3.7 )	( 96.2 )	( 155,173.6 )	( 6.6 )	( 108.7 )
	Telecommunication Equipment	( 88,918 )	( 10.1 )	( 93.8 )	( 173,559.6 )	( 7.3 )	( 92.6 )
2	Office Equipment	151,986	17.3	91.8	200,690.0	8.5	96.1
3	Industrial Equipment	21,605	2.5	73.2	240,470.9	10.2	100.6
4	Factory Equipment	2,902	0.3	98.9	56,643.0	2.4	106.0
5	Construction Equipment	5,764	0.7	90.6	56,243.3	2.4	86.6
6	Transport Equipment	110,535	12.6	104.7	342,026.2	14.5	105.9
	Automobile	( 101,156 )	( 11.5 )	( 104.9 )	( 305,466.1 )	( 12.9 )	( 106.7 )
	Vessel	( 73 )	( 0.0 )	( 98.6 )	( 1,962.4 )	( 0.1 )	( 152.8 )
7	Medical Equipment	32,319	3.7	104.0	115,319.0	4.9	89.3
8	Commercial and Service Equipment	136,601	15.5	92.6	306,106.0	13.0	99.8
	Commercial Equipment	( 110,668 )	( 12.6 )	( 92.2 )	( 213,690.4 )	( 9.0 )	( 97.3 )
9	Others	62,838	7.1	96.0	299,928.8	12.7	115.8
	Physical and Chemical Equipment	( 9,286 )	( 1.1 )	( 101.0 )	( 31,626.6 )	( 1.3 )	( 107.7 )
Total		878,863	100.0	96.4	2,362,792.7	100.0	103.9

## Changes in Lease Transaction Volume

Unit: in 100 Million Yen, Yearly Changes: Parenthesized

	Total	Information and Communication Equipment				Office Equipment	Industry Equipment	Factory Equipment	Construction Equipment	Transport Equipment			Medical Equipment	Commercial and Service Equipment		Others		
		Computer Hardware	Computer Software	Telecommunication Equipment	Automobile					Vessel	Commercial Equipment	Physical and Chemical Equipment						
Calendar Year	2015	51,563 (▲ 3.6)	15,945 (▲ 3.2)	8,180 (▲ 7.3)	3,800 (▲ 7.9)	3,965 (▲ 12.6)	4,404 (▲ 2.2)	6,646 (▲ 34.2)	1,156 (▲ 17.8)	1,418 (▲ 9.1)	6,521 (▲ 1.4)	5,787 (▲ 7.4)	17 (▲ 18.9)	2,489 (▲ 9.7)	6,257 (▲ 2.8)	4,246 (▲ 0.4)	6,727 (▲ 18.0)	539 (▲ 0.7)
	2016	50,294 (▲ 2.5)	15,411 (▲ 3.4)	7,934 (▲ 3.0)	3,481 (▲ 8.4)	3,996 (▲ 0.8)	4,204 (▲ 4.6)	5,878 (▲ 11.6)	1,049 (▲ 9.2)	1,356 (▲ 4.4)	6,561 (▲ 0.6)	5,830 (▲ 0.7)	111 (▲ 546.2)	2,572 (▲ 3.3)	6,225 (▲ 0.5)	4,107 (▲ 3.3)	7,039 (▲ 4.6)	607 (▲ 12.6)
	2017	48,368 (▲ 3.8)	15,582 (▲ 1.1)	8,198 (▲ 3.3)	3,522 (▲ 1.2)	3,862 (▲ 3.4)	4,211 (▲ 0.2)	4,769 (▲ 18.9)	1,230 (▲ 17.2)	1,439 (▲ 6.1)	6,613 (▲ 0.8)	5,877 (▲ 0.8)	29 (▲ 73.7)	2,491 (▲ 3.1)	6,055 (▲ 2.7)	4,299 (▲ 4.7)	5,977 (▲ 15.1)	642 (▲ 5.8)
Fiscal Year (Final Figures)	2015	50,393 (▲ 4.4)	15,940 (▲ 2.5)	8,107 (▲ 1.6)	3,808 (▲ 3.3)	4,025 (▲ 3.5)	4,300 (▲ 2.7)	6,158 (▲ 12.4)	1,131 (▲ 29.2)	1,373 (▲ 8.8)	6,103 (▲ 3.4)	5,463 (▲ 3.5)	20 (▲ 27.0)	2,485 (▲ 9.1)	6,123 (▲ 2.7)	4,127 (▲ 5.6)	6,781 (▲ 22.5)	551 (▲ 12.4)
	2016	50,203 (▲ 0.4)	15,648 (▲ 1.8)	8,248 (▲ 1.7)	3,453 (▲ 9.3)	3,947 (▲ 1.9)	4,205 (▲ 2.2)	5,565 (▲ 9.6)	1,118 (▲ 1.2)	1,307 (▲ 4.8)	6,716 (▲ 10.0)	5,968 (▲ 9.2)	115 (▲ 479.3)	2,533 (▲ 1.9)	6,150 (▲ 0.5)	4,165 (▲ 0.9)	6,959 (▲ 2.6)	647 (▲ 17.4)
	2017	48,759 (▲ 2.9)	15,604 (▲ 0.3)	8,374 (▲ 1.5)	3,350 (▲ 3.0)	3,880 (▲ 1.7)	4,116 (▲ 2.1)	4,898 (▲ 12.0)	1,199 (▲ 7.2)	1,601 (▲ 22.5)	6,705 (▲ 0.2)	5,955 (▲ 0.2)	27 (▲ 76.5)	2,448 (▲ 3.4)	6,059 (▲ 1.5)	4,296 (▲ 3.2)	6,131 (▲ 11.9)	651 (▲ 0.6)
Half Year	'16 10-3	25,979 (▲ 4.1)	8,501 (▲ 0.3)	4,530 (▲ 6.6)	2,035 (▲ 6.8)	1,936 (▲ 7.6)	2,104 (▲ 1.8)	2,654 (▲ 20.8)	674 (▲ 1.5)	792 (▲ 4.3)	3,315 (▲ 0.0)	2,975 (▲ 0.2)	15 (▲ 48.5)	1,198 (▲ 3.5)	3,032 (▲ 3.5)	2,073 (▲ 4.2)	3,709 (▲ 8.8)	322 (▲ 15.5)
	'17 4-9	22,735 (▲ 6.3)	6,896 (▲ 1.0)	3,594 (▲ 1.9)	1,428 (▲ 1.2)	1,874 (▲ 0.9)	2,088 (▲ 2.0)	2,391 (▲ 17.9)	534 (▲ 14.7)	650 (▲ 14.8)	3,229 (▲ 1.8)	2,863 (▲ 1.6)	13 (▲ 87.1)	1,291 (▲ 3.6)	3,067 (▲ 5.6)	2,197 (▲ 5.3)	2,590 (▲ 22.8)	294 (▲ 4.9)
	10-3	25,565 (▲ 1.6)	8,527 (▲ 0.3)	4,709 (▲ 3.9)	1,939 (▲ 4.7)	1,880 (▲ 2.9)	2,035 (▲ 3.3)	2,491 (▲ 6.1)	675 (▲ 0.0)	766 (▲ 3.3)	3,401 (▲ 2.6)	2,995 (▲ 0.7)	16 (▲ 3.1)	1,189 (▲ 0.7)	2,954 (▲ 2.6)	2,047 (▲ 1.3)	3,527 (▲ 4.9)	342 (▲ 6.2)
	'18 4-9	23,628 (▲ 3.9)	7,454 (▲ 8.1)	4,166 (▲ 15.9)	1,552 (▲ 8.7)	1,736 (▲ 7.4)	2,007 (▲ 3.9)	2,405 (▲ 0.6)	566 (▲ 6.0)	582 (▲ 13.4)	3,420 (▲ 5.9)	3,055 (▲ 6.7)	20 (▲ 52.8)	1,153 (▲ 10.7)	3,061 (▲ 0.2)	2,137 (▲ 2.7)	2,999 (▲ 15.8)	316 (▲ 7.7)
Quarter Year	'16 10-12	11,624 (▲ 8.4)	3,407 (▲ 2.3)	1,833 (▲ 1.3)	696 (▲ 14.0)	877 (▲ 1.2)	968 (▲ 6.6)	1,346 (▲ 22.3)	293 (▲ 25.7)	438 (▲ 7.9)	1,537 (▲ 2.6)	1,364 (▲ 3.6)	5 (▲ 34.9)	560 (▲ 1.6)	1,516 (▲ 3.2)	1,011 (▲ 3.1)	1,559 (▲ 19.8)	154 (▲ 13.9)
	'17 1-3	14,355 (▲ 0.3)	5,094 (▲ 1.1)	2,697 (▲ 10.6)	1,339 (▲ 2.6)	1,058 (▲ 13.8)	1,136 (▲ 2.8)	1,308 (▲ 19.2)	381 (▲ 31.3)	355 (▲ 0.6)	1,778 (▲ 2.4)	1,611 (▲ 3.6)	11 (▲ 55.5)	638 (▲ 5.2)	1,515 (▲ 3.8)	1,062 (▲ 5.2)	2,150 (▲ 1.2)	168 (▲ 16.9)
	4-6	11,214 (▲ 6.1)	3,396 (▲ 1.5)	1,708 (▲ 2.6)	756 (▲ 14.6)	932 (▲ 0.0)	1,061 (▲ 0.8)	1,195 (▲ 11.9)	233 (▲ 30.3)	262 (▲ 5.3)	1,562 (▲ 2.1)	1,359 (▲ 2.0)	7 (▲ 92.7)	723 (▲ 0.4)	1,501 (▲ 5.4)	1,078 (▲ 4.3)	1,281 (▲ 30.5)	130 (▲ 17.4)
	7-9	11,522 (▲ 6.5)	3,499 (▲ 3.3)	1,885 (▲ 1.2)	672 (▲ 10.6)	942 (▲ 1.8)	1,027 (▲ 3.2)	1,197 (▲ 23.1)	302 (▲ 5.0)	388 (▲ 22.3)	1,667 (▲ 1.5)	1,504 (▲ 1.3)	6 (▲ 37.7)	568 (▲ 8.3)	1,566 (▲ 5.8)	1,118 (▲ 6.2)	1,308 (▲ 13.5)	164 (▲ 7.9)
	10-12	11,278 (▲ 3.0)	3,593 (▲ 5.5)	1,908 (▲ 4.1)	756 (▲ 8.5)	929 (▲ 5.9)	987 (▲ 2.0)	1,070 (▲ 20.5)	314 (▲ 7.1)	435 (▲ 0.6)	1,606 (▲ 4.5)	1,403 (▲ 2.9)	6 (▲ 23.5)	562 (▲ 0.4)	1,473 (▲ 2.9)	1,040 (▲ 2.9)	1,238 (▲ 20.6)	181 (▲ 17.0)
	'18 1-3	14,287 (▲ 0.5)	4,934 (▲ 3.1)	2,801 (▲ 3.9)	1,184 (▲ 11.6)	950 (▲ 10.2)	1,048 (▲ 7.8)	1,421 (▲ 8.7)	361 (▲ 5.4)	332 (▲ 6.6)	1,795 (▲ 0.9)	1,592 (▲ 1.2)	10 (▲ 5.9)	628 (▲ 1.6)	1,481 (▲ 2.3)	1,007 (▲ 5.2)	2,289 (▲ 6.5)	162 (▲ 3.8)
	4-6	11,486 (▲ 2.4)	3,530 (▲ 3.9)	1,897 (▲ 11.1)	750 (▲ 0.8)	884 (▲ 5.2)	1,015 (▲ 4.3)	1,194 (▲ 0.1)	236 (▲ 1.5)	253 (▲ 3.3)	1,674 (▲ 7.2)	1,480 (▲ 8.9)	9 (▲ 41.1)	624 (▲ 13.7)	1,506 (▲ 0.3)	1,062 (▲ 1.5)	1,455 (▲ 13.6)	148 (▲ 14.2)
7-9	12,142 (▲ 5.4)	3,923 (▲ 12.1)	2,269 (▲ 20.3)	802 (▲ 19.4)	852 (▲ 9.5)	992 (▲ 3.4)	1,211 (▲ 1.2)	330 (▲ 9.5)	309 (▲ 20.2)	1,747 (▲ 4.8)	1,574 (▲ 4.7)	10 (▲ 64.9)	530 (▲ 6.8)	1,555 (▲ 0.6)	1,075 (▲ 3.9)	1,544 (▲ 18.0)	168 (▲ 2.6)	
Monthly	'17 9	4,856 (▲ 7.7)	1,631 (▲ 6.7)	830 (▲ 4.1)	323 (▲ 12.9)	479 (▲ 6.6)	391 (▲ 3.2)	482 (▲ 26.9)	154 (▲ 37.0)	168 (▲ 17.5)	582 (▲ 12.5)	527 (▲ 12.6)	1 (▲ 87.3)	241 (▲ 11.6)	549 (▲ 5.1)	389 (▲ 2.3)	658 (▲ 3.0)	62 (▲ 1.8)
	10	3,724 (▲ 1.0)	1,310 (▲ 2.1)	726 (▲ 0.7)	307 (▲ 10.4)	277 (▲ 1.2)	342 (▲ 3.1)	348 (▲ 15.5)	96 (▲ 16.4)	136 (▲ 1.5)	471 (▲ 4.5)	419 (▲ 3.4)	1 (▲ 69.0)	188 (▲ 3.9)	447 (▲ 7.1)	313 (▲ 14.3)	386 (▲ 5.1)	72 (▲ 16.0)
	11	3,456 (▲ 3.7)	1,049 (▲ 9.3)	567 (▲ 4.2)	212 (▲ 8.6)	269 (▲ 22.9)	302 (▲ 2.2)	302 (▲ 7.5)	98 (▲ 22.4)	158 (▲ 1.8)	521 (▲ 0.7)	456 (▲ 2.7)	0 (▲ 89.8)	158 (▲ 5.4)	463 (▲ 1.5)	335 (▲ 7.1)	405 (▲ 5.8)	51 (▲ 15.9)
	12	4,097 (▲ 9.6)	1,234 (▲ 6.0)	615 (▲ 10.3)	236 (▲ 6.1)	383 (▲ 0.4)	343 (▲ 0.7)	420 (▲ 35.7)	120 (▲ 8.1)	141 (▲ 2.3)	614 (▲ 18.3)	528 (▲ 14.3)	4 (▲ 320.5)	216 (▲ 0.8)	562 (▲ 12.4)	392 (▲ 7.6)	446 (▲ 38.2)	58 (▲ 19.4)
	'18 1	3,442 (▲ 0.3)	1,412 (▲ 0.9)	917 (▲ 14.9)	290 (▲ 26.2)	205 (▲ 1.7)	283 (▲ 7.6)	303 (▲ 10.8)	94 (▲ 19.8)	82 (▲ 21.9)	401 (▲ 0.5)	359 (▲ 3.1)	2 (▲ 4.2)	154 (▲ 1.6)	414 (▲ 5.1)	286 (▲ 3.0)	298 (▲ 11.1)	46 (▲ 8.9)
	2	3,822 (▲ 2.6)	1,244 (▲ 7.4)	663 (▲ 4.2)	320 (▲ 29.5)	261 (▲ 5.1)	289 (▲ 8.8)	585 (▲ 69.7)	100 (▲ 1.5)	82 (▲ 16.3)	533 (▲ 9.4)	459 (▲ 3.7)	5 (▲ 169.8)	162 (▲ 4.9)	400 (▲ 3.0)	273 (▲ 7.1)	426 (▲ 34.4)	45 (▲ 3.7)
	3	7,023 (▲ 2.2)	2,278 (▲ 10.1)	1,221 (▲ 3.3)	573 (▲ 17.9)	484 (▲ 15.8)	475 (▲ 7.3)	533 (▲ 22.7)	167 (▲ 17.1)	168 (▲ 10.3)	861 (▲ 3.5)	774 (▲ 5.7)	3 (▲ 56.1)	311 (▲ 6.2)	667 (▲ 0.0)	448 (▲ 5.4)	1,565 (▲ 30.5)	71 (▲ 10.5)
	4	4,247 (▲ 2.6)	1,493 (▲ 8.2)	823 (▲ 7.0)	372 (▲ 9.6)	298 (▲ 9.8)	364 (▲ 9.2)	311 (▲ 14.6)	71 (▲ 13.0)	94 (▲ 10.7)	550 (▲ 9.0)	463 (▲ 5.7)	4 (▲ 59.8)	213 (▲ 14.7)	529 (▲ 1.2)	366 (▲ 3.3)	621 (▲ 9.5)	54 (▲ 21.6)
	5	3,136 (▲ 0.9)	892 (▲ 17.5)	504 (▲ 20.4)	172 (▲ 22.7)	216 (▲ 7.6)	301 (▲ 3.4)	253 (▲ 41.1)	82 (▲ 12.7)	80 (▲ 5.4)	522 (▲ 3.7)	468 (▲ 13.3)	1 (▲ 18.9)	218 (▲ 4.6)	481 (▲ 2.7)	347 (▲ 4.5)	306 (▲ 13.6)	45 (▲ 12.9)
6	4,104 (▲ 3.4)	1,145 (▲ 8.9)	569 (▲ 9.5)	206 (▲ 25.6)	370 (▲ 19.6)	351 (▲ 5.2)	629 (▲ 57.0)	83 (▲ 14.4)	79 (▲ 14.4)	602 (▲ 8.6)	549 (▲ 8.2)	4 (▲ 65.8)	192 (▲ 21.3)	495 (▲ 2.9)	349 (▲ 5.1)	528 (▲ 18.8)	49 (▲ 8.1)	
7	3,746 (▲ 9.7)	1,164 (▲ 25.3)	708 (▲ 42.1)	261 (▲ 44.4)	195 (▲ 22.1)	340 (▲ 1.7)	264 (▲ 32.4)	95 (▲ 17.8)	92 (▲ 21.8)	587 (▲ 7.9)	521 (▲ 5.3)	4 (▲ 99.6)	166 (▲ 1.7)	486 (▲ 3.9)	340 (▲ 4.0)	552 (▲ 63.9)	57 (▲ 9.5)	
8	3,226 (▲ 0.8)	999 (▲ 6.5)	616 (▲ 10.5)	184 (▲ 9.1)	199 (▲ 6.2)	273 (▲ 5.9)	288 (▲ 11.1)	104 (▲ 54.1)	93 (▲ 9.0)	523 (▲ 3.5)	470 (▲ 2.6)	4 (▲ 2.9)	146 (▲ 11.5)	504 (▲ 1.3)	367 (▲ 2.4)	296 (▲ 5.5)	47 (▲ 5.3)	
9	5,170 (▲ 6.5)	1,760 (▲ 7.9)	945 (▲ 13.9)	357 (▲ 10.7)	458 (▲ 4.5)	379 (▲ 3.1)	659 (▲ 36.7)	131 (▲ 14.5)	124 (▲ 25.9)	637 (▲ 9.5)	584 (▲ 10.7)	3 (▲ 431.4)	218 (▲ 9.4)	566 (▲ 3.0)	368 (▲ 5.2)	695 (▲ 5.7)	64 (▲ 3.0)	

Rounding off to hundreds of millions yen, the figure of the total column may not correspond to the inclusive sum of each item in the table. Also, the figure of information-related device may not correspond to the inclusive sum of its breakdown.