

## Lease Statistics (The First Half of FY2023)

The lease transaction volume in the first half of FY2023 (from April 2023 to September 2023) is 2,122.7 billion yen, increased by 9.7% compared with the same period of the previous year. On the first half year basis, it increased continuously from the second half of FY2022.

With regard to the type of equipment on a half year basis, Information and Communication Equipment (12.5% up), Industrial Equipment (22.4% up), Construction Equipment (13.4% up), Transport Equipment (14.5%), and Medical Equipment (10.6% up) have respectively showed double-digit increase. In addition, Office Equipment (3.9% up), Factory Equipment (4.3% up), and Commercial and Service Equipment (4.0% up) have respectively showed positive growth.

The lease transaction volume in September 2023 is 498.9 billion yen, increased by 24.2%, compared with the same period of the previous year. The lease transaction volume has showed positive growth in a row of 5 months. With regard to the type of equipment, Information and Communication Equipment (29.6% up), Office Equipment (30.7% up), Industrial Equipment (66.3% up), Factory Equipment (20.7% up), Construction Equipment (11.2% up), and Transport Equipment (21.7% up) have respectively showed double-digit increase. In addition, Medical Equipment (8.7% up) has showed positive growth in a row of 2 months. On the other hand, Commercial and Service Equipment (5.2% down) has turned to negative growth for the first time for the 5 months.

### Changes in Leasing Transaction Volume (Monthly)

Year, Month	Leasing Cases	Yearly Change (%)	Leasing Volume (in million yen)	Yearly Change (%)
2022, 9	130,131	104.8	401,830.3	98.7
10	129,438	108.6	346,294.2	99.7
11	115,844	96.0	300,760.6	104.6
12	125,195	98.1	392,642.6	110.2
2023, 1	126,664	93.1	329,799.4	91.8
2	118,495	115.3	352,652.5	120.4
3	163,819	106.4	593,147.1	105.7
4	157,873	92.8	357,871.1	94.8
5	122,808	107.6	284,805.7	110.6
6	138,839	114.2	366,205.7	109.3
7	133,837	108.6	312,544.0	104.7
8	129,635	112.1	302,305.3	114.5
9	157,461	121.0	498,936.9	124.2
2023,4 - 2023,9	840,453	108.5	2,122,668.7	109.7

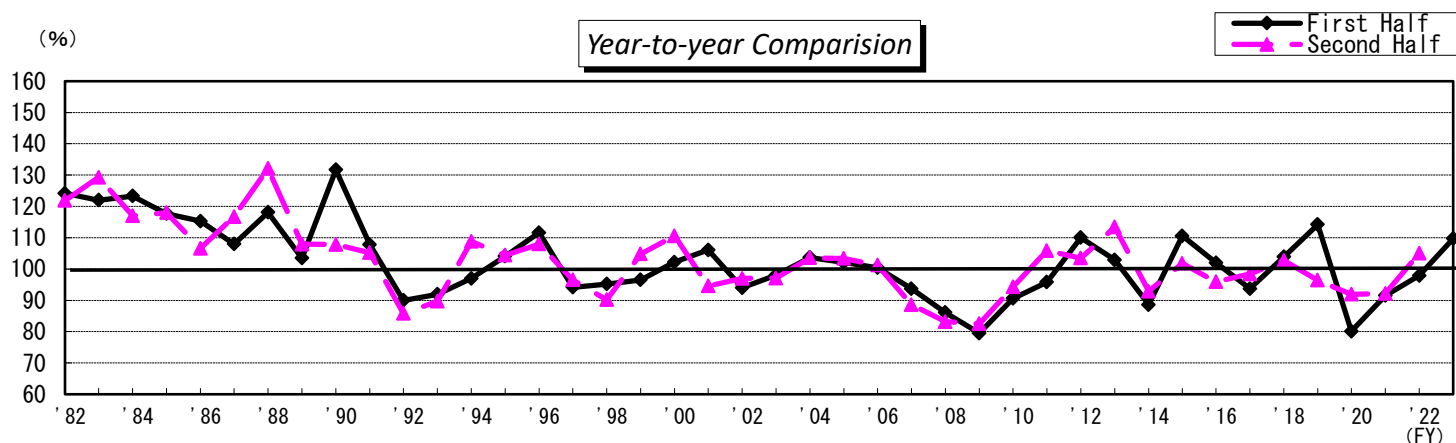
★Corporations researched: 203 (as of September 2023)

# Change in Total of Lease Transaction Volume (Separated by Half)

(in 100 million yen %)

Fiscal Year	First Half (April–September)			Second Half (October–March)		
	Leasing Volume	Yearly Change	Half-yearly Change	Leasing Volume	Yearly Change	Half-yearly Change
1972	1,489	—	—	2,079	—	139.6
1973	2,649	177.9	127.4	2,608	125.4	98.4
1974	2,713	102.4	104.0	2,670	102.4	98.4
1975	2,844	104.8	106.5	2,831	106.0	99.5
1976	(regular member) 3,131	110.1	110.6	3,612	127.6	115.4
	(total) 3,629	—	—	4,280	—	117.9
1977	4,200	115.7	98.1	4,415	103.1	105.1
1978	5,227	124.5	118.4	5,381	121.9	102.9
1979	6,863	131.3	127.5	7,484	139.1	109.0
1980	7,766	113.2	103.8	7,850	104.9	101.1
1981	9,458	121.8	120.5	9,996	127.3	105.7
1982	11,751	124.2	117.6	12,181	121.9	103.7
1983	14,333	122.0	117.7	15,755	129.3	109.9
1984	17,666	123.3	112.1	18,428	117.0	104.3
1985	20,800	117.7	112.9	21,736	118.0	104.5
1986	23,992	115.3	110.4	23,172	106.6	96.6
1987	25,901	108.0	111.8	27,033	116.7	104.4
1988	30,595	118.1	113.2	35,723	132.1	116.8
1989	31,659	103.5	88.6	38,553	107.9	121.8
1990	41,700	131.7	108.2	41,579	107.8	99.7
1991	44,960	107.8	108.1	43,745	105.2	97.3
1992	40,474	90.0	92.5	37,532	85.8	92.7
1993	37,185	91.9	99.1	33,684	89.7	90.6
1994	36,082	97.0	107.1	36,643	108.8	101.6
1995	37,554	104.1	102.5	38,249	104.4	101.9
1996	41,907	111.6	109.6	41,290	108.0	98.5
1997	39,474	94.2	95.6	39,860	96.5	101.0
1998	37,595	95.2	94.3	35,944	90.2	95.6
1999	36,298	96.5	101.0	37,661	104.8	103.8
2000	37,081	102.2	98.5	41,644	110.6	112.3
2001	39,356	106.1	94.5	39,405	94.6	100.1
2002	36,996	94.0	93.9	38,224	97.0	103.3
2003	36,252	98.0	94.8	37,112	97.1	102.4
2004	37,576	103.7	101.3	38,432	103.6	102.3
2005	38,380	102.1	99.9	39,752	103.4	103.6
2006	38,541	100.4	97.0	40,215	101.2	104.3
2007	36,119	93.7	89.8	35,627	88.6	98.6
2008	31,091	86.1	87.3	29,654	83.2	95.4
2009	24,712	79.5	83.3	24,461	82.5	99.0
2010	22,398	90.6	91.6	23,064	94.3	103.0
2011	21,463	95.8	93.1	24,423	105.9	113.8
2012	23,616	110.0	96.7	25,284	103.5	107.1
2013	24,310	102.9	96.1	28,661	113.4	117.9
2014	21,533	88.6	75.1	26,618	92.9	123.6
2015	23,807	110.6	89.4	27,084	101.8	113.8
2016	24,271	102.0	89.6	25,979	95.9	107.0
2017	22,735	93.7	87.5	25,565	98.4	112.4
2018	23,628	103.9	92.4	26,267	102.7	111.2
2019	26,983	114.2	102.7	26,000	99.0	96.4
2020	21,613	80.1	83.1	23,904	91.9	110.6
2021	19,767	91.5	82.7	22,044	92.2	111.5
2022	19,342	97.9	87.7	23,153	105.0	119.7
2023	21,227	109.7	91.7			

Note: Leasing volume before FY 1976 does not include that of associated members.



## Leasing Volume by Type of Equipment (Sep. 2023)

		Leasing cases	Component Ratio (%)	Year-on-year Change (%)	Leasing Volume (in million yen)	Component Ratio (%)	Year-on-year Change (%)
1	Information and Communication Equipment	75,316	47.8	139.3	190,777.2	38.2	129.6
	Computer Hardware	( 54,971 )	( 34.9 )	( 155.5 )	( 105,150.4 )	( 21.1 )	( 135.5 )
	Computer Software	( 4,337 )	( 2.8 )	( 110.8 )	( 26,345.4 )	( 5.3 )	( 122.7 )
	Telecommunication Equipment	( 16,008 )	( 10.2 )	( 108.1 )	( 59,281.4 )	( 11.9 )	( 123.3 )
2	Office Equipment	25,547	16.2	112.6	39,336.5	7.9	130.7
3	Industrial Equipment	3,428	2.2	112.2	81,108.3	16.3	166.3
4	Factory Equipment	415	0.3	98.6	9,480.0	1.9	120.7
5	Construction Equipment	1,229	0.8	93.0	14,058.2	2.8	111.2
6	Transport Equipment	22,126	14.1	116.1	66,880.8	13.4	121.7
	Automobile	( 20,509 )	( 13.0 )	( 116.6 )	( 61,983.6 )	( 12.4 )	( 127.0 )
	Vessel	( 8 )	( 0.0 )	( 72.7 )	( 113.6 )	( 0.0 )	( 36.9 )
7	Medical Equipment	4,692	3.0	95.3	22,594.4	4.5	108.7
8	Commercial and Service Equipment	16,595	10.5	99.4	42,259.0	8.5	94.8
	Commercial Equipment	( 11,861 )	( 7.5 )	( 96.6 )	( 28,109.3 )	( 5.6 )	( 89.0 )
9	Others	8,113	5.2	102.6	32,442.5	6.5	92.8
	Physical and Chemical Equipment	( 1,416 )	( 0.9 )	( 103.9 )	( 6,461.7 )	( 1.3 )	( 112.5 )
Total		157,461	100.0	121.0	498,936.9	100.0	124.2

【Corporations researched: 203】

## Leasing Volume by Type of Equipment

### (Apr. 2023 - Sep. 2023)

		Leasing cases	Component Ratio (%)	Yearly Change (%)	Leasing Volume (in million yen)	Component Ratio (%)	Yearly Change (%)
1	Information and Communication Equipment	404,059	48.1	118.4	764,248.6	36.0	112.5
	Computer Hardware	( 301,733 )	( 35.9 )	( 123.5 )	( 432,440.0 )	( 20.4 )	( 120.6 )
	Computer Software	( 25,307 )	( 3.0 )	( 109.6 )	( 116,186.5 )	( 5.5 )	( 105.9 )
	Telecommunication Equipment	( 77,019 )	( 9.2 )	( 104.2 )	( 215,622.1 )	( 10.2 )	( 102.1 )
2	Office Equipment	129,742	15.4	95.1	178,672.1	8.4	103.9
3	Industrial Equipment	16,870	2.0	104.5	206,168.0	9.7	122.4
4	Factory Equipment	1,857	0.2	93.0	35,786.4	1.7	104.3
5	Construction Equipment	5,654	0.7	100.2	63,674.1	3.0	113.4
6	Transport Equipment	111,834	13.3	103.9	339,113.2	16.0	114.5
	Automobile	( 103,085 )	( 12.3 )	( 103.4 )	( 308,697.9 )	( 14.5 )	( 118.8 )
	Vessel	( 70 )	( 0.0 )	( 89.7 )	( 1,814.2 )	( 0.1 )	( 38.9 )
7	Medical Equipment	26,411	3.1	105.2	116,200.4	5.5	110.6
8	Commercial and Service Equipment	98,579	11.7	103.3	251,959.0	11.9	104.0
	Commercial Equipment	( 72,577 )	( 8.6 )	( 102.1 )	( 172,421.4 )	( 8.1 )	( 105.1 )
9	Others	45,447	5.4	100.8	166,846.9	7.9	92.6
	Physical and Chemical Equipment	( 7,304 )	( 0.9 )	( 89.6 )	( 34,279.9 )	( 1.6 )	( 107.9 )
Total		840,453	100.0	108.5	2,122,668.7	100.0	109.7

## Changes in Lease Transaction Volume

Unit: in 100 Million Yen, Yearly Changes: Parenthesized

	Total	Information and Communication Equipment			Office Equipment	Industry Equipment	Factory Equipment	Construction Equipment	Transport Equipment			Medical Equipment	Commercial and Service Equipment		Others			
		Computer Hardware	Computer Software	Telecommunication Equipment					Automobile	Vessel	Commercial Equipment		Physical and Chemical Equipment					
Calendar Year	2020	47,309 (▲ 10.6)	18,093 (▲ 7.0)	9,673 (▲ 14.7)	3,451 (▲ 12.4)	4,970 (▲ 19.0)	3,624 (▲ 9.7)	4,598 (▲ 11.3)	1,076 (▲ 18.2)	1,394 (▲ 1.4)	6,509 (▲ 10.7)	5,749 (▲ 9.8)	65 (▲ 27.2)	2,087 (▲ 15.6)	4,976 (▲ 19.8)	3,281 (▲ 19.4)	4,953 (▲ 11.5)	715 (▲ 7.5)
	2021	42,536 (▲ 10.1)	16,677 (▲ 7.8)	9,084 (▲ 6.1)	3,116 (▲ 9.7)	4,477 (▲ 9.9)	3,400 (▲ 6.2)	3,842 (▲ 16.4)	767 (▲ 28.8)	1,325 (▲ 5.0)	6,372 (▲ 2.1)	5,563 (▲ 3.2)	77 (▲ 18.2)	2,118 (▲ 1.5)	4,577 (▲ 8.0)	3,005 (▲ 8.4)	3,459 (▲ 30.2)	680 (▲ 4.9)
	2022	41,872 (▲ 1.6)	15,658 (▲ 6.1)	8,398 (▲ 7.5)	2,766 (▲ 11.2)	4,494 (▲ 0.4)	3,349 (▲ 1.5)	4,085 (▲ 6.3)	742 (▲ 3.2)	1,312 (▲ 1.0)	6,123 (▲ 3.9)	5,285 (▲ 5.0)	80 (▲ 3.2)	2,163 (▲ 2.1)	4,733 (▲ 3.4)	3,214 (▲ 6.9)	3,707 (▲ 7.2)	722 (▲ 6.1)
Fiscal Year (Final Figures)	2020	45,910 (▲ 13.9)	17,697 (▲ 13.8)	9,300 (▲ 22.8)	3,300 (▲ 17.8)	5,097 (▲ 14.1)	3,695 (▲ 3.7)	4,427 (▲ 15.6)	944 (▲ 20.7)	1,464 (▲ 0.9)	6,507 (▲ 11.9)	5,865 (▲ 8.5)	80 (▲ 61.2)	2,090 (▲ 11.4)	4,875 (▲ 20.2)	3,400 (▲ 18.7)	4,212 (▲ 19.0)	831 (▲ 9.5)
	2021	42,186 (▲ 8.1)	16,602 (▲ 6.2)	8,496 (▲ 8.6)	3,163 (▲ 4.1)	4,943 (▲ 3.0)	3,249 (▲ 12.1)	3,786 (▲ 14.5)	762 (▲ 19.3)	1,431 (▲ 2.3)	6,430 (▲ 1.2)	5,573 (▲ 5.0)	74 (▲ 8.3)	2,010 (▲ 3.9)	4,528 (▲ 7.1)	3,168 (▲ 6.8)	3,389 (▲ 19.5)	626 (▲ 24.6)
	2022	43,106 (▲ 2.2)	16,252 (▲ 2.1)	9,348 (▲ 10.0)	3,008 (▲ 4.9)	3,896 (▲ 21.2)	3,430 (▲ 5.6)	4,197 (▲ 10.8)	747 (▲ 1.9)	1,425 (▲ 0.4)	6,300 (▲ 2.0)	5,575 (▲ 0.0)	94 (▲ 28.2)	2,227 (▲ 10.8)	4,963 (▲ 9.6)	3,378 (▲ 6.6)	3,565 (▲ 5.2)	710 (▲ 13.4)
Half Year	'21 10-3	22,044 (▲ 7.8)	8,926 (▲ 6.7)	4,867 (▲ 10.4)	1,714 (▲ 10.5)	2,345 (▲ 5.6)	1,574 (▲ 16.8)	2,109 (▲ 6.7)	409 (▲ 17.5)	759 (▲ 0.0)	3,116 (▲ 2.8)	2,682 (▲ 6.5)	29 (▲ 23.6)	1,037 (▲ 2.6)	2,286 (▲ 5.4)	1,483 (▲ 8.1)	1,828 (▲ 18.4)	389 (▲ 6.7)
	'22 4-9	19,342 (▲ 2.1)	6,795 (▲ 7.3)	3,585 (▲ 5.5)	1,098 (▲ 21.9)	2,112 (▲ 0.7)	1,720 (▲ 3.4)	1,684 (▲ 0.4)	343 (▲ 7.6)	561 (▲ 1.8)	2,962 (▲ 7.1)	2,598 (▲ 5.5)	47 (▲ 5.6)	1,050 (▲ 1.7)	2,424 (▲ 8.5)	1,641 (▲ 9.0)	1,802 (▲ 9.1)	318 (▲ 1.0)
	10-3	23,153 (▲ 5.0)	9,138 (▲ 2.4)	4,874 (▲ 0.2)	1,883 (▲ 9.9)	2,380 (▲ 1.5)	1,676 (▲ 6.4)	2,462 (▲ 16.7)	402 (▲ 1.6)	756 (▲ 0.4)	3,309 (▲ 6.2)	2,882 (▲ 7.5)	48 (▲ 67.9)	1,156 (▲ 11.5)	2,415 (▲ 5.6)	1,687 (▲ 13.7)	1,838 (▲ 0.6)	410 (▲ 5.4)
	'23 4-9	21,227 (▲ 9.7)	7,642 (▲ 12.5)	4,324 (▲ 20.6)	1,162 (▲ 5.9)	2,156 (▲ 2.1)	1,787 (▲ 3.9)	2,062 (▲ 22.4)	358 (▲ 4.3)	637 (▲ 13.4)	3,391 (▲ 14.5)	3,087 (▲ 18.8)	18 (▲ 61.1)	1,162 (▲ 10.6)	2,520 (▲ 4.0)	1,724 (▲ 5.1)	1,668 (▲ 7.4)	343 (▲ 7.9)
Quarter Year	'21 10-12	9,911 (▲ 10.3)	3,736 (▲ 5.6)	2,009 (▲ 6.7)	584 (▲ 26.0)	1,143 (▲ 12.9)	757 (▲ 16.9)	933 (▲ 10.6)	202 (▲ 33.3)	401 (▲ 1.4)	1,486 (▲ 1.4)	1,296 (▲ 4.1)	7 (▲ 38.0)	477 (▲ 2.9)	1,126 (▲ 6.2)	710 (▲ 13.8)	793 (▲ 35.3)	182 (▲ 0.6)
	'22 1-3	12,133 (▲ 5.6)	5,190 (▲ 7.5)	2,858 (▲ 12.9)	1,131 (▲ 0.3)	1,201 (▲ 0.5)	817 (▲ 16.6)	1,176 (▲ 3.4)	207 (▲ 7.3)	358 (▲ 1.6)	1,630 (▲ 4.0)	1,386 (▲ 8.7)	21 (▲ 16.8)	560 (▲ 2.3)	1,159 (▲ 4.6)	773 (▲ 2.1)	1,035 (▲ 2.0)	206 (▲ 12.7)
	4-6	9,700 (▲ 1.9)	3,340 (▲ 8.1)	1,757 (▲ 10.1)	607 (▲ 10.2)	975 (▲ 2.9)	901 (▲ 0.6)	838 (▲ 2.2)	146 (▲ 14.6)	258 (▲ 1.9)	1,472 (▲ 8.5)	1,292 (▲ 4.5)	33 (▲ 16.4)	541 (▲ 4.1)	1,211 (▲ 9.5)	800 (▲ 6.7)	991 (▲ 26.7)	161 (▲ 0.2)
	7-9	9,642 (▲ 2.4)	3,456 (▲ 6.4)	1,828 (▲ 0.7)	491 (▲ 32.7)	1,137 (▲ 1.3)	818 (▲ 6.7)	846 (▲ 1.4)	197 (▲ 1.6)	303 (▲ 1.6)	1,490 (▲ 5.6)	1,305 (▲ 6.4)	14 (▲ 13.3)	509 (▲ 1.1)	1,212 (▲ 7.5)	841 (▲ 11.2)	811 (▲ 6.7)	156 (▲ 1.8)
	10-12	10,397 (▲ 4.9)	3,673 (▲ 1.7)	1,955 (▲ 2.7)	537 (▲ 7.9)	1,181 (▲ 3.3)	812 (▲ 7.3)	1,226 (▲ 31.3)	191 (▲ 5.2)	392 (▲ 2.1)	1,530 (▲ 3.0)	1,301 (▲ 0.4)	12 (▲ 58.2)	553 (▲ 15.8)	1,150 (▲ 2.1)	800 (▲ 12.7)	870 (▲ 9.7)	197 (▲ 8.4)
	'23 1-3	12,756 (▲ 5.1)	5,465 (▲ 5.3)	2,920 (▲ 2.1)	1,346 (▲ 19.0)	1,200 (▲ 0.1)	863 (▲ 5.6)	1,237 (▲ 5.2)	211 (▲ 1.9)	364 (▲ 1.6)	1,780 (▲ 9.1)	1,581 (▲ 14.1)	37 (▲ 71.2)	603 (▲ 7.8)	1,265 (▲ 9.1)	886 (▲ 14.6)	968 (▲ 6.5)	212 (▲ 2.7)
	4-6	10,089 (▲ 4.0)	3,749 (▲ 12.3)	2,040 (▲ 16.1)	593 (▲ 2.3)	1,116 (▲ 14.4)	880 (▲ 2.4)	742 (▲ 11.4)	157 (▲ 6.9)	287 (▲ 11.1)	1,624 (▲ 10.3)	1,462 (▲ 13.1)	12 (▲ 62.1)	613 (▲ 13.3)	1,272 (▲ 5.0)	890 (▲ 11.3)	765 (▲ 22.9)	162 (▲ 0.1)
7-9	11,138 (▲ 15.5)	3,894 (▲ 12.7)	2,284 (▲ 24.9)	569 (▲ 15.9)	1,040 (▲ 8.5)	907 (▲ 10.8)	1,320 (▲ 56.0)	201 (▲ 2.3)	350 (▲ 15.4)	1,767 (▲ 18.6)	1,625 (▲ 24.5)	6 (▲ 58.7)	549 (▲ 7.8)	1,247 (▲ 2.9)	834 (▲ 0.8)	904 (▲ 11.5)	181 (▲ 15.9)	
Monthly	'22 9	4,018 (▲ 1.3)	1,472 (▲ 12.4)	776 (▲ 9.2)	215 (▲ 51.6)	481 (▲ 8.5)	301 (▲ 4.5)	488 (▲ 25.7)	79 (▲ 17.8)	126 (▲ 10.8)	550 (▲ 6.7)	488 (▲ 6.0)	3 (▲ 37.0)	208 (▲ 8.6)	446 (▲ 15.2)	316 (▲ 24.5)	350 (▲ 12.2)	57 (▲ 3.0)
	10	3,463 (▲ 0.3)	1,320 (▲ 14.9)	726 (▲ 25.5)	221 (▲ 5.8)	373 (▲ 9.4)	312 (▲ 15.5)	376 (▲ 77.7)	54 (▲ 8.7)	114 (▲ 16.8)	488 (▲ 2.5)	417 (▲ 0.6)	8 (▲ 376.4)	168 (▲ 3.7)	322 (▲ 15.4)	226 (▲ 0.0)	311 (▲ 30.4)	62 (▲ 11.3)
	11	3,008 (▲ 4.6)	981 (▲ 10.5)	602 (▲ 27.5)	144 (▲ 10.3)	234 (▲ 7.8)	233 (▲ 1.6)	315 (▲ 1.0)	61 (▲ 0.2)	137 (▲ 6.2)	500 (▲ 0.9)	446 (▲ 3.1)	3 (▲ 1.9)	186 (▲ 32.5)	359 (▲ 6.7)	248 (▲ 9.7)	236 (▲ 12.6)	66 (▲ 21.9)
	12	3,926 (▲ 10.2)	1,372 (▲ 5.7)	627 (▲ 11.6)	172 (▲ 8.5)	574 (▲ 4.6)	268 (▲ 6.8)	535 (▲ 32.4)	77 (▲ 16.1)	141 (▲ 5.0)	541 (▲ 5.4)	438 (▲ 1.2)	2 (▲ 50.5)	200 (▲ 13.6)	469 (▲ 14.4)	326 (▲ 26.5)	323 (▲ 13.7)	70 (▲ 19.3)
	'23 1	3,298 (▲ 8.2)	1,359 (▲ 17.4)	745 (▲ 24.7)	320 (▲ 7.1)	294 (▲ 5.3)	244 (▲ 12.8)	318 (▲ 16.5)	48 (▲ 2.3)	94 (▲ 3.5)	425 (▲ 6.9)	383 (▲ 8.4)	2 (▲ 38.9)	146 (▲ 27.5)	405 (▲ 10.6)	289 (▲ 14.5)	257 (▲ 8.0)	54 (▲ 21.0)
	2	3,527 (▲ 20.4)	1,507 (▲ 34.0)	803 (▲ 25.5)	381 (▲ 67.1)	323 (▲ 26.1)	230 (▲ 9.7)	295 (▲ 31.5)	59 (▲ 5.1)	101 (▲ 18.2)	545 (▲ 9.5)	479 (▲ 14.7)	12 (▲ 629.6)	181 (▲ 45.7)	341 (▲ 5.0)	242 (▲ 11.2)	268 (▲ 5.1)	62 (▲ 20.8)
	3	5,931 (▲ 5.7)	2,599 (▲ 7.4)	1,371 (▲ 11.7)	645 (▲ 15.6)	582 (▲ 8.2)	390 (▲ 0.5)	624 (▲ 9.3)	104 (▲ 2.2)	168 (▲ 3.7)	809 (▲ 10.1)	720 (▲ 16.8)	22 (▲ 22.4)	276 (▲ 17.8)	519 (▲ 10.7)	355 (▲ 17.2)	442 (▲ 13.9)	95 (▲ 10.7)
	4	3,579 (▲ 5.2)	1,427 (▲ 2.1)	884 (▲ 14.8)	274 (▲ 15.2)	268 (▲ 26.3)	336 (▲ 5.8)	208 (▲ 0.8)	41 (▲ 14.4)	93 (▲ 6.9)	515 (▲ 0.1)	451 (▲ 1.5)	7 (▲ 0.8)	197 (▲ 7.4)	484 (▲ 6.4)	334 (▲ 6.7)	277 (▲ 31.0)	57 (▲ 4.8)
	5	2,848 (▲ 10.6)	910 (▲ 17.4)	513 (▲ 8.1)	148 (▲ 23.6)	249 (▲ 37.8)	252 (▲ 2.9)	244 (▲ 15.9)	53 (▲ 24.8)	86 (▲ 2.4)	498 (▲ 14.7)	453 (▲ 16.4)	2 (▲ 29.0)	199 (▲ 12.4)	383 (▲ 11.3)	267 (▲ 26.3)	222 (▲ 10.0)	37 (▲ 24.5)
6	3,662 (▲ 9.3)	1,412 (▲ 27.6)	643 (▲ 25.5)	170 (▲ 4.3)	598 (▲ 39.0)	292 (▲ 2.4)	290 (▲ 31.1)	63 (▲ 11.6)	108 (▲ 23.7)	611 (▲ 16.8)	558 (▲ 25.3)	3 (▲ 87.0)	217 (▲ 20.2)	405 (▲ 15.7)	289 (▲ 25.3)	265 (▲ 22.6)	66 (▲ 28.4)	
7	3,125 (▲ 4.7)	1,018 (▲ 10.6)	626 (▲ 14.4)	143 (▲ 6.6)	248 (▲ 43.2)	285 (▲ 3.7)	232 (▲ 25.7)	56 (▲ 0.6)	125 (▲ 55.9)	565 (▲ 13.1)	514 (▲ 19.7)	4 (▲ 24.2)	162 (▲ 1.9)	415 (▲ 10.5)	276 (▲ 9.3)	267 (▲ 27.4)	68 (▲ 28.6)	
8	3,023 (▲ 14.5)	968 (▲ 14.4)	606 (▲ 20.2)	162 (▲ 32.4)	199 (▲ 8.9)	228 (▲ 5.7)	277 (▲ 59.2)	50 (▲ 19.5)	84 (▲ 12.8)	533 (▲ 21.0)	491 (▲ 26.6)	1 (▲ 86.1)	160 (▲ 18.3)	410 (▲ 4.8)	277 (▲ 1.7)	312 (▲ 24.0)	49 (▲ 5.8)	
9	4,989 (▲ 24.2)	1,908 (▲ 29.6)	1,052 (▲ 35.5)	263 (▲ 22.7)	593 (▲ 23.3)	393 (▲ 30.7)	811 (▲ 66.3)	95 (▲ 20.7)	141 (▲ 11.2)	669 (▲ 21.7)	620 (▲ 27.0)	1 (▲ 63.1)	226 (▲ 8.7)	423 (▲ 5.2)	281 (▲ 11.0)	324 (▲ 7.2)	65 (▲ 12.5)	

Rounding off to hundreds of millions yen, the figure of the total column may not correspond to the inclusive sum of each item in the table. Also, the figure of information-related device may not correspond to the inclusive sum of its breakdown.